

Belleville Times

Year No. 43 An Orechio Publication

Serving Belleville Since 1909

Thursday, October 2, 1986

35¢



In good standing — Belleville Auxiliary Police serve the community. Pictured standing in front are Lt. Nick Bonfante, Ptl. Harry Fulmer, Capt. William Howey, and Deputy Chief Rocco Landolfi. Pictured kneeling in front are Sgt. Paul Wentworth, Ptl. Ron Hoffman, Ptl. Rich Mormando and Sgt. Joseph Pereira. Seven additional members are not pictured. (Photo by Christopher Bifani)

Belleville Auxiliary Police seeks a few good members

By Christopher Bifani

Belleville Police Chief George Lister once said that law enforcement is a partnership between the police and the community. Faced with a rising tide of crime, it is a partnership the Belleville Police Department seeks to build on.

One way, able-bodied citizens can help is by becoming a member of the Belleville Auxiliary Police Force. According to Deputy Chief Rocco Landolfi, joining the force is a good way for Bellevillites to fight back against crime.

"The townspeople are talking about the crime here," Landolfi told the Times. "Here's a way

they can do something about it." Added Lieutenant Nick Bonfante, "It's a way to serve our community with pride."

Shrinking in size but not commitment

Landolfi said that "as recently as 1972 the auxiliary police had about 60 members but now there are only 15." He explained that some members retired, others moved away from town. Still others went on to join regular police departments, including four men who currently serve on the Belleville Police Force.

Past Auxiliary police members who are now with the Belleville

Police department include Patrolmen Victor Infante, Chris Kondreck and Frank Valesse. The deputy chief added that a Belleville Police superior is also a past auxiliary member — Sergeant Leonard Burrell.

Despite the shrinking ranks, the commitment to Belleville, made by the force continues to be strong.

Deputy Chief Landolfi estimates that his squad of just four men and one woman provided about 2,000 manhours of service to the town last year, a figure that would translate to

several thousand dollars' worth of paid time.

However, several members of the force were quick to emphasize that "we're an augment to the regular police force, not a replacement."

The role of the auxiliary police, all agreed, is to assist the regular police not work around them — or take work away from them. Working together, they said, under the overall direction of Chief Lister and Public Safety Commissioner Ralph DiRuggiero is what makes for better law enforcement.

(continued page 3)

New initiatives outlined

Commissioner declares war on the rising tide of crime

By Christopher Bifani

Although Belleville has suffered recent spate of violent crimes, the township still boasts a crime rate substantially lower than that of neighboring Newark, and lower than most of the other communities which border Newark.

The Belleville Police Department apparently wants to keep it that way. According to Public Safety Commissioner Ralph DiRuggiero and Police Chief George Lister, several initiatives have been, or are about to be, implemented in the "war against crime."

Borderline commission

DiRuggiero told the Times of

his participation in a recently formed "borderline commission" which brought together representatives of the Newark Police Department as well as the police departments of nearly every town which borders Newark.

The objective, according to DiRuggiero, was to "coordinate law enforcement by opening up communications working jointly on police efforts, and to jointly support legislation that's tough on crime."

The meeting was held at the 744 Club on Broad Street in Newark. Hosting the meet was Newark City Councilman Ronald Weiss.

DiRuggiero praised the meeting, calling it a "real interesting situation" and added that the borderline commission will be holding subsequent meetings in the other four Essex communities which border the city.

"I was going to volunteer Belleville as a meeting location, but somebody raised their hand before me," the commissioner said. He promises to host a borderline commission in the future, however, and is hopeful that this group will lead to an enhanced regional crimefighting

(continued on page 9)



DiRuggiero:

"Several new measures are being taken to fight crime."

(Photo by Jaye Tarantino)

Piro is Grand Marshal

Big parade draws near

By Howard Klausner

When James Piro's grand parents arrived in Nutley in the 1890's, they were not thinking about leading any parades.

"My grandparents were part of the building of the modern, industrialized 20th Century. The railroad, the bridges, the highways, the factories — they were all built and manned by ethnic labor," Piro, a Nutley attorney, recalled.

This Oct. 12, Piro will be Grand Marshall of the Fourth Annual Belleville-Nutley-Columbus Day Parade.

"I couldn't be more pleased than if it were the New York City parade," Piro said.

Piro noted that the parade is more than a tribute to any particular ethnic group, but a tribute



James Piro

Will a strike follow?

Custodians picket school board meet over lack of pact

School No. 10 on Belleville Avenue, the site of Monday's Board of Education meeting, was also the scene of an angry, but peaceful, protest by most of the 57 member Belleville Custodian and Maintenance Workers Union.

The union's two-year contract, which took "over a year to settle" according to union president Morris Renna, expired on July 1st of

this year and the custodians, maintenance workers and bus drivers have been working without a contract ever since.

The protest was marked by dozens of protest signs which read "we care about your kids, too," among other sayings. In the face of deadlock negotiations, union members say, they have chosen to

(continued on page 3)

Let's get physical!

Belleville's annual Health Fair Oct 15

Commissioner Michael P. Pizzi, director of public affairs, announces that the Belleville health department will hold its annual Mini Health Fair at 383 Washington Avenue, Belleville on Wednesday, October 15. Hours of the fair will be from 9 a.m. to 1 p.m. and from 6 p.m. to 8 p.m.

Services to be offered are:

1. Flu shots
2. High blood pressure screening
3. Diabetes screening
4. Eye screening — all examinations by an eye specialist to detect glaucoma, amblyopia (lazy eye) and depth perception.
5. Oral cancer screening — an examination to detect cancer of the mouth.
6. Podiatry Clinic
7. Introduction to Chiropractic — information and materials.

There will also be a clinic held only for flu shots at Public School No. 4, Magnolia Street, in the all purpose room, on the same day, October 15, from 5 to 7 p.m.

Flu shots will be administered to:

1. All senior citizens 65 years of age and over.
2. Any 30 years of age or over who has a chronic illness. This includes heart disease, chronic bronchitis or bronchiectasis, diabetes mellitus, or other chronic metabolic disorders.

The flu vaccine will not be administered to:

1. Pregnant women
2. Anyone who has a fever or an acute illness.
3. Anyone who has received another vaccine within the past 14 days.
4. Those with an allergy to eggs, chicken, or chicken feathers. Residents who have questions about the vaccine are advised to consult their physicians.

Commissioner Pizzi also stresses the importance of diabetes screening for persons over 40 who are overweight or who have a family history of diabetes. Those who do participate should eat a balanced meal at least two hours before being tested. This will help insure a more accurate reading.

Eight door prizes will be awarded. Application blanks for the prizes will be available at the two clinic sites.

Commissioner Pizzi urges citizens to attend the Fair. Even for those not wishing to take part in any screening programs, there will be a great deal of interesting and valuable health information available.

Reporters wanted...

Due to continued growth, Orechio Publications is seeking two qualified full-time news reporters to cover events and meetings in Belleville, Bloomfield and Nutley.

Experience in both journalism and photography is preferred, as is the ability to meet deadlines and work well under pressure.

Orechio Publications offers a competitive starting salary, benefits and a challenging, rewarding first step in the journalism field.

To arrange an interview, phone 667-2100.

Contents...

Belleville briefly	2
Editorial	4
Bifani on Belleville/Citizens Forum	5
The Belleville beat	7
Events in the area	10
Social news	11
Sports	13-16
Belleville pix	15
Obituaries/Religious viewpoint	17
Columbus Day Sales	18-19
Classified	20-23

BELLEVILLE briefly...

Students can win \$200, \$100, \$50

Italian heritage biography contest

The Belleville Public Library and the Belleville Italian American Civic Association announce the second annual Italian Heritage Biography Contest, open to Belleville students enrolled in grades 7-12 in Belleville public or parochial schools.

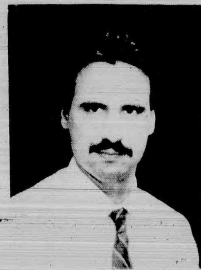
The purpose of the contest is to have young people with an interest in Italian achievements, research and write a 500 to 700 word biography of notable people of Italian descent. Entrants will be divided into two categories: grades 7 to 9 and 10 to 12.

Prices in each category will include:
First prize: \$200 savings bond; 2nd prize: \$100 savings bond; 3rd prize: \$50 savings bond.

A recent meeting of Lee Carlo and Lucy Vecchione representing the Italian American Civic Association and David Bryant and Adrea Cohen representing the Belleville Public Library led to contest rules and judging procedures. The fine collection of books about Italian Americans, donated to the Library by the BIACA in 1984 will be used by students participating in the contest.

Information about the contest, rules and judging will be distributed at all classes, grades 7-12. Entries will be accepted at the library between Nov. 10 and Nov. 15. Winners will be announced on Jan. 15, 1987. A reception for winners and their parents will be held at the library the evening of Jan. 22, 1987. For more information, please call David Bryant or Adrea Cohen at 450-3434 during library hours.

R. Giordano joins Occupation Center



Richard J. Giordano of Belleville has been named coordinator of production at the Occupational Center, 391 Lakeside Ave., Orange, New Jersey's oldest and largest work and training facility for the handicapped. Rocco J. Meola, executive director, said

In this post Giordano is in charge of all production and quality control for the agency.

The Occupational Center, with a staff of 50, serves more than 450 handicapped clients, offering them a variety of job-related services that range from sheltered workshop employment to placement in jobs in private industry.

As production coordinator, Giordano is in charge of supervisors of the handicapped clients who work and receive their training in the Center's sheltered workshop.

Giordano was formerly the production manager for Cosmagique, Inc. of East Rutherford. He also has experience as plant manager in Harrison for Goodwill of New Jersey.

Earlier, he owned and operated a bakery and pizzeria in Belleville. He lives on Liberty Avenue, Belleville.

Belleville Sidewalk Sale

The Belleville Chamber of Commerce will be sponsoring a Sidewalk sale on Washington Avenue.

Thursday, Oct. 9, 9:30 a.m. - 6:00 p.m.
Friday, Oct. 10, 9:30 a.m. - 9:00 p.m.
Saturday, Oct. 11, 9:30 a.m. - 6:00 p.m.

Michael Danguone promoted at Boiling Springs Savings

Edward C. Gibney, President of Boiling Springs Savings and Loan Association, has announced that Michael V. Danguone of Belleville has been appointed Savings Department Manager and Branch Coordinator for all offices.

Danguone graduated from Central High School, attended the National Association of Management Savings Banks at the University of Massachusetts, and also participated in the American Institute of Banking.

Prior to joining Boiling Springs Savings, Danguone was employed at the Anchor Savings Bank and at the Howard Savings Bank.

He resides with his wife, Mariene, and their two children, Renee and Michael.



Library has new number

The Belleville Public Library will have a new phone number and a new phone system, effective September 19, 1986. According to Library Director David Bryant, the new phone system will work more efficiently than the library's current system, enabling callers to reach specific departments or librarians more quickly. The new phone system, owned by the library, will also save substantially on telephone costs.

The new library numbers are:
450-3434 (all departments, Main Library)
450-3436 (all departments, Main Library)
450-3438 (Silver Lake Branch Library)

Library hours at the Main Library, adult area remain: Monday, Tuesday, Thursday, 9 a.m. to 9 p.m.; Wednesday, Friday, Saturday, 9 a.m. to 5 p.m.

The James J. Cozzarelli Jr. Childrens Room: Monday 9 a.m. to 9 p.m.; Tuesday through Saturday 9 a.m. to 5 p.m.

The Silver Lake Branch Library is open Monday through Friday 1 p.m. to 5 p.m.

Catholic open house

Saint Peter Parish at 152 William Street, Belleville announces that all are invited to introduce someone to a fuller life in the Catholic Church at a gathering on Monday, October 6 at 8 p.m. in St. Peter's rectory.

All are welcome. Non Catholics curious about the Church, practicing Catholics with questions, the baptized who have "dropped out", are asked to join for coffee and fellowship.

Disabled vet seeks apartment

A disabled veteran who must vacate his Belleville apartment at the end of the month, wishes to rent in town, and is seeking a reasonably priced first floor apartment.

His son is afflicted with cerebral palsy and his wife is a nurse and at Clara Maass Hospital.

The family is seeking 5 rooms on the first floor, and a landlord who is willing to allow a handicapped parking space in front of the building.

Anyone who may be able to help this family with suitable, affordable housing is asked to phone 751-5914.

Bellevillite teaches drivers to better assist the disabled

A group of drivers who transport Essex County's elderly and disabled residents have received specialized training to improve services for their passengers.

Eighteen drivers completed an 11 hour course in passenger assistance techniques. Essex County Executive Peter Shapiro said the course was "one way to make sure the transportation network we provide not only gets our

residents where they want to go, but provides them transportation with proper care and sensitivity, as well."

The course was taught by Larry Cuomo of Belleville, community service planner for the county's Division on Aging, who is in charge of the transportation network that services 2,000 residents daily, six days a week.

Cuomo, a certified instructor, concentrated on each driver's method of assisting passengers who are elderly, physically or developmentally disabled, visually impaired or blind.

"By keeping the class small, we were able to provide individual instruction and evaluate how to improve each driver's personal approach," Cuomo said. "And in the 11 hours of course work, we accomplished a great deal, especially in pointing out how each driver could improve."

The course, which was taught at the Red Cross in East Orange, brought drivers from each of the four agencies who provide transportation under contracts with the county.

Essex County contracts with the Red Cross, East Orange, Tri City and Transportation for Independent Living, both of Newark, and Senior Service Corp. Orange, for transportation on designated routes, as well as for demand-response trips, which are primarily medically related.

A second course will be scheduled for the remaining drivers in the network system.

Troise Insurance Agency INSURANCE POOR ?

Many Discounts Available
Truck Auto Life Homeowners
Tenant Insurance
Free Computerized Quote
Personalized Service
759-4100

Monday thru Friday 9 a.m. - 5:30 p.m.
Saturdays 9 a.m. to 12 noon

172 WASHINGTON AV. BELLEVILLE



1885

1986

101 Years of Uninterrupted Dividends

LOWER NEW CAR RATES?

2.9
2.5
2.4

TAKE THE REBATE INSTEAD AND GET A BETTER DEAL WITH FIRST DeWITT!

We can give you better, faster, friendlier service and still save you money. By combining the substantial rebates that automakers are offering with First DeWitt's low auto loan rates, we can actually save you money, right now, month to month, and year to year! Call our Auto Loan Department today for the details.

8.75% APR...36 mos.

NEW CARS ONLY — LIMITED TIME ONLY! And you don't need an account with us to qualify.

FIRST DeWITT SAVINGS

AND LOAN ASSOCIATION

BELLEVILLE • BLOOMFIELD • CEDAR GROVE • HOPATCONG

WEST CALDWELL • BRICKTOWN • PARSIPPANY



TELEPHONE **751-2800** ALL OFFICES



FREE MONEY

Well, not really. But Real Estate Ownership comes darn close to it. The average home in this area has nearly doubled in value in just a few years. So if you own one, we can tell you how much free money you've made. And if you don't, what are you waiting for??

REILLY REALTORS

759-1682

Now Interviewing For Career Positions

STRIDE RITE



Now you can pop into Popples.

Popples are popping up all over the place. They're the most popular baby walker in the world. They're the only walker that makes it possible to pop into Popples. They're the only walker that makes it possible to pop into Popples. They're the only walker that makes it possible to pop into Popples.

Plaza Bootery



Shoe Repair

483 Franklin Ave.
Nutley, N.J. 667-8964



Free Parking

NOTICE OF AVAILABILITY OF CHARITY CARE SERVICES

Clara Maass Medical Center of Belleville, New Jersey will make available 1/1/86 through 12/31/86, \$50,000 of Hill Burton Charity Care - Charity care will be available on FIRST REQUEST BASIS to eligible persons who are unable to pay for hospital service until the facilities annual compliance level is met. Eligibility for charity care will be limited to persons whose family income is not more than the current poverty income guidelines established by the Community Services Administration. This notice is published in accordance with 42 CFR 124.205 Notice of Availability of Uncompensated Services 11/1/85.

A black and white photograph capturing a moment during a protest. A group of people, mostly young adults, are gathered together. In the foreground, several individuals hold up large, hand-drawn signs. One sign clearly reads "NO CONTRACT BUT STILL WORKING". Another sign below it says "WE KEEP YOUR SCHOOLS CLEAN & MARA...". To the left, another person holds a sign that partially reads "CONTRACT NO CONTRACT BUT STILL WORKING". Further back, a man with a prominent mustache and long hair holds a sign that also says "NO CONTRACT BUT STILL WORKING". Other signs are visible but less legible, including one that says "BY YOUR WHOLE WE CARE FOR YOU". The background shows more people and what appears to be a street setting. The overall tone is one of organized civil disobedience.

Auxiliary Police seeks volunteers

The Bellevue Auxiliary Police. Until recently, the role played

Police endorse Amato

Carpets, Inc.
237 Centre Street
Nutley, N.J. 661-0156


**Pharmacy
Footnotes**[illegible]

Kathy Moraski, a member of the union's executive committee, told the board, "This board tries to

"We'll be out demonstrating at all local events — school board

A report on the board's position in the negotiations with the Belleville Custodian and Maintenance Association will appear in next week's edition of the Times.

Senator Carmen A. Orechio has been appointed by Gov. Thomas Kean to the Governor's Council on New Jersey Outdoors.



Denim - Black - Gray
 Sizes 34 to 52
\$29⁹⁵ - \$32⁹⁵



GEM

Carpets, Inc.

237 Centre Street
Nutley, N.J. 661-0156

HARVEST THE SAVINGS

mannington

20% OFF SALE

- Built in shine, never needs waxing, brighteners, scrubbing or dressing!
- BOCA
- ARISTOCON
- LUSTRECON

mannington

THE BEAUTIFUL FLOORS WITH THE "BUILD-IN SHINE"

HURRY! SALE ENDS OCT. 19th!!

SEE WHAT'S NEW AT THE
 1984-85 MANNINGTON SHOW
 Monday, October 22nd, 10:00 AM
 Tuesday, October 23rd, 10:00 AM

**MONDAY, TUESDAY
NITE SPECIALS!**

4PM 'TIL CLOSING

"Monday NITE"
Buy 1 Pie and get
any sandwich for
\$1.00
pick-up or delivery

"TUESDAY"
1 Large
PIE **\$2.99**
pick-up or
delivery

LUNCH SPECIAL
Monday thru Thursday
a complimentary slice pizza or cup
of soda with any main purchase

11am - 2pm

Ritacco Bros. PIZZERIA
18 WASHINGTON AVE. NUTLEY 667-9600



Time 11 AM
to 2 PM
October
11, 18, 21
and November 1

**3 HOURS
OF BOWLING
FUN FOR KIDS'S 12
JUST \$3.75!**

**WIN A MURRAY 2-
STREET MACHINE.
KENNER SUPER POWERS
ACTION TOYS AND MORE!**



Games! Prices! Refreshments! Bowling and more! The biggest, best, value and entertainment in a great way. In which you can win a location and more... and that's just the beginning. Make your bowling nights more fun and more exciting. Call us today!

**Olympic Bowl
Brunswick**

679 Washington Ave.
Belleville, N.J. 07109
751-2111

On the former site of Crecca's code compliance and wetland

Lavern, 80 East Passaic Ave., Nutley, Frank and Gregory Leo have built a new 2-story Dutch Colonial office building of brick and cedar. The building has already received rave reviews from neighbors and town officials for its quality construction, sensitive design and extensive landscaping. These features enabled the Leos to change the "for sale" sign to a "Sold" sign before construction was even completed! The new owners, LaVecchia and Zarro, accountants from Belleville, are expected to occupy the entire first floor of the building with the second floor available for lease. Greg Leo is quick to give much credit to the Nutley Building Department which he says "was instrumental in overcoming potential bureaucratic obstacles to our panelized construction methods. Due to the building shell being pre-constructed in New York State and shipped to the site for erection, the inspectors were forced to do numerous job checks to insure

grateful for this extra effort". In addition Leo says, his new construction supervisor (also from Nutley) Ernest Pereira "made the job run so smoothly that I was finally able to sleep nights!"

Since Frank and Greg teamed up over five years ago they have virtually never been left with a finished project sitting unsold on the market. This includes such developments as Riverside Court Condominiums in Bloomfield, Victoria Commons Condominiums in Glen Ridge, Monomnock Townhouses in Caldwell, in addition to numerous single and two-family homes and commercial projects.

The future will see the development of a new Townhouse/apartment condominium project to be called Francesca Gables in Bloomfield and a massive office-hotel-conference center project being planned for the former site of the Scientific Glass plant also in Bloomfield bordering the Glen Ridge Country Club.

Belleville Times

Serving Belleville Since 1909 (USPS 049-220)

Published Every Thursday
At 155A Washington Ave.
Belleville, N.J. 07109

Annual Subscription \$14.00
Senior Citizens \$7.00

Second-Class Postage Paid
At Newark, N.J.
Postmaster: Send address
changes to The Belleville Times,
155A Washington Ave., Belleville, N.J. 07109

Frank A. Orechio, Publisher
Christopher Bifani, Editor
Helen Maguire, social editor
Michael Lamberti, sports editor
Jaye Tarantino, advertising rep.

To report news and other items
of interest, call:
759-3200

The Change of Seasons

Autumn is upon us
As Summer slowly slips away,
We see the changes of nature
Taking form day by day.

The Master Artist on High paints
a different hue —
Warm colors of yellow, rust and brown
for us to view.

Tinted leaves are drifting towards
the ground,
Squirrels are hiding the acorns they
have found.

The cold Winter days are close by,
But the Winter sleep isn't for long —
And once again we'll hear the
Spring Song!!

— By Anna Rosa Mazur
Belleville

The Newark issue

Although taxes promise to be the number one issue in the November Essex County Executive election, there is another issue we hope the candidates address; one which we believe affects Bellevillites just as much and in some cases more.

The issue is Newark, our troubled neighbor to the south.

Bellevillites like to think of themselves as part of three town 'regional community' that also includes Nutley and Bloomfield.

In fact, the three towns are linked, both culturally and socially.

However, people from outside of Essex are more likely to lump Belleville in with East Orange, Irvington, and Elizabeth — the aging, densely populated, working class municipalities which surround the once-grand metropolis.

Sure, that point of view is unfair, but geography doesn't lie. And even though spillover crime isn't nearly as bad in Belleville as in the other Newark fringe towns, the fact is, crime in Belleville is rising, and a very significant percentage is due to Newark suspects and conditions.

This alone is reason enough to put the revitalization of Newark as a top issue in the coming campaign, but for Bellevillites there are

other reasons, like property values.

While our township may take comfort in knowing that North Newark is slowly redeveloping, there are still vast areas of that ward that are virtual combat zones. Projects that look like B movie action sets, streets littered with abandoned cars, buildings choked with graffiti.

Although Belleville and all of Essex is currently enjoying a rise in property values, should the real estate market taper off, it's a good bet that Belleville, bordering the largely seedy scape of Newark, will be the first to suffer.

The Essex County Executive that Belleville voters help elect must have an agenda that includes an improved Newark. He must work in partnership with the new Newark administration to seek state and federal assistance, he must help to fight the crime and he must help to check the blight.

Right now, Newark is a concern to all of Essex. But for Belleville, it is a concern that is right next door. The Newark issue must be addressed.

Failure to recognize the relationship that Newark has to the rest of Essex County is an indictment of leadership — or lack of it — of Peter Shapiro.

Too little, too late ...

To the editor:

I was happy to see the article on the front page of the Belleville Times dated Sept. 25, 1986 titled "Zoning Board passes condo over neighborhood objections," but it was too little too late. I had attended all the meetings. What a total waste of time.

There were over 30 neighbors in a small room, many standing most of the time. We brought up objections ranging from an overcrowded area now with no more room for any more off street parking due to the fact that the surrounding streets have one side parking only. Many Nutley residents park in this area because they are not allowed to park overnight in Nutley. Passaic Ave. is at a higher level and water pumped from that property would add to the present water problems at the lower level of Emmet & Mary Streets. When it rains heavy we have curb to curb water because the sewers cannot take it that fast.

There would be no aesthetic improvement as the building would be located in our back yards surrounded by a wall. The proposed 3 story building facing the south could block the sun on a small one family house on Jannerone Street. The proposed 20 ft. driveway from Passaic Avenue going in and out of the property might be inadequate to accommodate a hook and ladder truck in the event of fire.

The driveway would also create additional traffic problems for children pass-

ing it without the aide of a cross guard.

It is difficult enough now trying to get onto Passaic Ave. from Emmet on Meacham Streets due to the upgrade and the amount of traffic on a heavily traveled street — that connects with Route 3 and goes into the city of Passaic — without adding an additional 40 to 50 cars. The property is currently listed as a two-family zone. The largest building in the area is a 6 family house located at Passaic Ave. and Jannerone Street. We also have a factory at the corner of Jannerone and Park Streets which brings tractor trailers into the area that run corners over our sidewalks.

If the property could be subdivided, there would legally be enough land to build four two family houses, so how could they possibly endorse a ten family condominium? Six apartments will have 3 bedrooms each and the other four apartments would have two bedrooms each. Parking for 21 cars is definitely not enough.

But talking to the panel was like talking to a herd of horses with blinders on. All they could see and emphasize was the need for more apartments and the best presented and designed proposal that they had seen in a long time.

Their decision was unanimous. On what basis do they make a decision and how do they get away with making an unaccepted one? I'd like to know.

Marie Mauriello
Emmet Street

Letters to the Editor

'Doc' Ellis' memory lives...

To the editor:

Below is a copy which I read at the funeral service of Bill (Doc) Ellis. I am sure many who knew Bill share the same sentiments.

Bill,

Your sudden passing was a great loss to

all of us, Mother Family Friends.

Rest assured you will live on forever in our memory, heart, and prayer, for a person so remembered never dies.

We'll miss you buddy. God bless and keep you.

Buzz Voga

Professional Women...

To the editor:

At our bi-monthly at the recent "Festival in the Park" in Nutley, it was brought to our attention that many of the ladies in the area are unaware of our existence. Therefore, we would like to take this opportunity to introduce ourselves to your readers.

We are the Tri-Town Business and Professional Women's Club, of Belleville, Bloomfield and Nutley. Please consider this an invitation to all employed women in the area to join us.

Our dinner meetings are held on the

fourth Thursday of the month, 6:30 p.m., at the Ramada Inn on Route 3 east, Clifton and cost \$16. Our annual dues are \$25. Local businessmen are urged to suggest their female employees consider attending one of our meetings. Our programs are geared to current issues.

Further information may be obtained by calling during the day 430-6439 for Mary Jane Lutz or Fran Sentner. Hope to see you soon.

Tri-Town BPW
Mary Jane Lutz
Membership Chair

First Lady remembered...

To the editor:

On September 22, 1986, Belleville lost one of its best citizens, Esther Marotti. Mrs. Marotti was more than the Mayor's wife.

When I went to No. 8 the junior high and senior high, she was a crossing guard, at Hornblower and Van Houten Avenues, long before Mayor Marotti was Commissioner or Mayor. Rain or shine she was there looking after the kids.

As years past, I had gotten to know Esther as a kind generous lady. Never in the time I've known her did she have a bad word about anyone, no matter what happened in town. She earned being called the First Lady of Belleville.

Even when I criticized the Mayor at meetings she was still my friend. She had a glow to her that made you feel good. Most of all I'll miss her saying "hi Kennedy."

God bless her.

Kevin G. Kennedy



Belleville Times Columns

The Times' editorial columns — Golden Comments, Citizens Forum and Bifani on Belleville are the opinions of the authors and not necessarily the opinions of this newspaper.

Golden Comments by Jim Golden, appears weekly. Bifani on Belleville appears monthly in the first issue of each month. Belleville residents wishing to respond, may

use the Citizens Forum section, provided that the copy submitted is typewritten and thoughtfully prepared. Citizens Forum is also open to Belleville residents wishing to comment on any township topic.

As always, our letters to the editor section is open to all, for topics in and out of town.

The reamined format and coverage of the Times, reflected in letters to the Editor columns, has galvanized the community's citizenry to a keener concern over happenings and management of vital concern to all its varied elements of the township — people, business, manufacturing, household, rental control, public safety, development, zoning, traffic control, schools, etc. And taxes.

Golden Comments

James R. Golden

We understand the avid solicitude and concern engendered by the unfolding and disclosure of newsworthy events which had been put on the "back burner" in deference to less controversial issues or social events.

Yes! The readers want "action reading" stories with controversy and "meat" in them. I think they are getting now which they are liking. Especially is this scenario appetizing with a local municipal election down the road within several months and a handful of eager beaver prospective candidates hopefully setting up the stage with rhetoric and bombast to promote their own political platform and aggrandizement by contentious grandiloquence patently designed to unseat some of the incumbents.

There is another side of the coin which is being obscured in legal notices tucked away in the paper which seldom are read, notwithstanding that in one edition of that paper amounted to \$589.18 that would be poured into the coffers of the publisher — notices which would be inserted in another publication.

• An ordinance requiring applicants for development and developers to establish deposits of money in escrow for the township of Belleville to cover costs and expenses of professionals and consultants.

• An ordinance to amend the revised general ordinance of the township of Belleville to enact Chapter XXII, recycling of waste materials, providing penalties for the violation thereof.

• Noise control ordinance of the Township of Belleville.

• An ordinance to amend the revised general ordinance of the Township of Belleville, chapter 8.16, handicapped parking spaces.

• An ordinance amending chapter VIII of the general ordinances of the Township of Belleville entitled "traffic" parking on street with deal permit only.

When adopted these will affect the manner in which cars are permitted to park, how we handle our garbabe and observe rules governing obnoxious noise, and most important, the requirement that developers deposit money in escrow to cover costs and expenses of professionals and consultants.

Publicly expressed opinions of "slanted" news coverage have been bandied about in circles supportive of the incumbents and their followers who contend tolerance, reasonable arrangement of differences and respectful deference has been accorded those opposing new building construction of the planned police headquarters.

They opine the principals leading The Concerned Citizens of Belleville group are using the organization as a sounding board upon which they wish to project their political ambitions in next May's municipal election.

Objective reportorial coverage often reflects the interpretive evaluation of events as perceived in the mind of the scribe, at public meetings characterized by turbulence and spontaneous outbursts of invectives tend to distort and obfuscate issues, especially should political overtones become involved.

There is no place for "slanted" coverage nor predilection, as may have been inferred, no publisher would condone it. Mr. Bifani has put together a better newspaper and writes well. If there is a suspicion of prejudice he should be told about it in face to face discussion, candor being the greatest gem of diplomacy. This will permit him to grid for the rigors of Belleville's maelstrom of puerile politics — no quarter is given and none taken — batten down the hatches. Looks like heavy political weather ahead.

Borderline cooperation

that strides are being taken from within the city to fight the problems with threaten not only Newarkers — but Essex residents outside the city, too.

Commissioner DiRuggiero said the meeting focused on opening up communications, working jointly on police efforts, and jointly supporting tough anti-crime legislation at the state level.

DiRuggiero told the Times that the first meeting of the borderline commission "went very well" and that he plans to volunteer Belleville as the locale for subsequent meetings.

The Times applauds Commissioner DiRuggiero for representing Belleville in such a potentially useful mechanism for battling a crime plague which respects no borders.

Recently the City of Newark and most of the communities which border Newark sent representatives of their police departments to a meeting in the North Ward.

The topic? Better cooperation and coordination between the departments with enhanced regional law enforcement as a goal.

Commissioner of Public Safety Ralph DiRuggiero was there representing Belleville, because our township has a big stake in the crime fighting game.

Right now, although Belleville's crime rate is rising at an alarming rate, it still boasts one of the lowest crime rates of any town which borders Newark.

The meeting was organized by Newark councilman Ronald Rice and his initiative demonstrates

Pictures and words

There's a well-worn adage which holds that a picture is worth a thousand words. In journalism that adage is gospel, because pictures aid in interpreting complex information.

Earlier this week, I was trying to interpret the fiscal mess which has dogged the municipal construction controversy. I wanted to understand how the problem began, and why it's not going away. From my files, I pulled the architect's rendering of the ill-fated \$10 million municipal complex. Remember that picture?

And then it hit me. That picture, the one worth a thousand, a million words when it debuted last February on the Times' front page was the only picture.

For some stupid, shortsighted reason our town fathers presented the townspeople with only one single, solitary picture to choose from.

This or nothing, they said: the bold step forward or a continued decline.



Bifani on...
Belleville

OCTOBER 1986

But a major municipal construction project is a serious purchase for every taxpayer, not just commissioners. Even a comparatively modest project will cost all homeowners several hundred dollars or more over the tax back, one of the town's.

Is there any reader in town who would plunk down that kind of cash without comparison shopping? Without looking at more than one picture?

Is there any reader who would buy a new home without looking at other homes first? How about your last car?

These analogies bring us back to our board of commissioners who went beyond the absurdity of a one choice, one picture decision — and actually made a decision without seeing any picture at all!

The commissioners, you see, tell us that they selected their architectural firm not on a picture — but on words, thousands of words.

Instead of asking the architects to supply rough pictures of municipal buildings — like, heck, traditional square, triangular — they merely held "interviews." Eighteen architects were alleged to "interviewed" in a selection process, the legitimacy of which is still being debated today. But that's another column.

The fact is, Bellevillites were denied — along with the commissioners they elected — the privilege of checking out these 18 architects before one was picked.

Picked, I might add, not on the revealing basis of creative rough sketches, but through a sketchy interview process that seems, in retrospect, more like a gift of gab contest.

Frank Richlan, of Manhattan-based Beckard Richlan Associates, impressed our commissioners with his gift of gab. He's a former resident, he told them, he cares about the township.

In fact, Public Safety Commissioner Ralph DiRuggiero is still impressed. He says Richlan's pictures are in the best interests of the town.

Actually, it would have been in the town's best interests if all 18 initially contacted architects had come up with rough pictures. And wouldn't it have been great if the 18 candidates seeking this lucrative architectural plum had displayed their rough pictures at a town meeting?

Even if every architect declined to "show their stuff" before inking a deal, the one architect selected on words — thousands of words — should have at least drawn up plenty of rough pictures to choose from before proceeding fullsteam blank check ahead on just one.

One which ultimately proved vehemently controversial. One which cost the township \$400,000 — or \$10 for every man, woman, child and dog in Belleville.

So the original \$10 million plan — the big picture which never went before the planning board — was knocked down by citizen outrage. So it cost \$400,000. We learn from our mistakes, right? Costly mistakes especially. Or so goes that other well-worn adage.

Not always.

The commissioners and the architect we bought without public comparison shopping have delivered another, single picture, another chance of one. This one's smaller, and down on the side street. This one, they say, will cost less than \$5 million.

It's not a pretty picture.

Like its \$10 million predecessor, it does nothing to complement Town Hall or surrounding private architecture. It's more form than function, and from the picture I say, I don't like the form much anyway.

Well, if you're one of the privileged few who have actually seen the picture, you probably noticed that although the police parking lot is on the building's west side, there's no door on the west wall. Brilliant.

So if this problem were not corrected, policemen would have to walk around the building to get to their cars. Picture that.

Or picture this: Since the courtroom is in the center of the building, with police offices on either side, prisoners would have to walk through non-secure areas, near where clerks would work, in order to get from one side to the other.

Belleville Police Chief George Lister, who has wisely avoided the political controversy, is on the building committee for only two reasons: To get it built right, and to get it built fast.

But since "right" is more important to him than "fast" he had to send Beckard Richlan back to the drawing board for a revised picture.

Not a new picture — at this stage of the game that would cost Bellevillites dearly — but a modification of the same picture, the one that precious few citizens saw before a tax poll of 120 was already spent on it.

So no I have seen two pictures from the Beckard Richlan firm. Not one, but two. And so far, I'm not impressed.

But I still don't judge the firm's talents. Unlike our commissioners, I'd insist on lots of pictures before concluding that this firm didn't have what it takes to build better in Belleville.

As a matter of fact, it's quite likely that if Richlan had instructed his staff to design lots of pictures for us — ambitious sketches showing a variety of sizes, shapes, and scopes to choose from — the end result, after sufficient public and sub-board input of course, would have been a nice police station a majority of town people support.

And what a picture that would be!

— Christopher Bifani

By Richard Yanuzzi

As children, we were taught that a penny saved is a penny earned. As we grow to adulthood, we put this saying into practice, building our lives, raising our families, and contributing to the future. We spend so much time and energy earning enough money to sustain a lifestyle that, when confronted with waste and mismanagement, we rebel in disgust at the lack of competence. Today, in the Township of Belleville, we are confronted with just such a situation.

Citizens Forum



By now most residents are familiar with the trials and tribulations of the Township Commissioners, and their "habit" of lavishly spending tax dollars. Many Bellevillites have expressed their opinions through attending township meetings, and by writing letters to this publication. Public outrage has led to an election of township police allowing the original ten million dollars municipal complex to be cut to a five million dollar police station. It is with the current plans for the police station that problems start to arise.

Paramount on any list of questions should be the cost of the project. Taking into consideration the fact that over \$450,000 of your tax dollars were spent on the ill-fated \$10 million monstrosity, and that all that money was lost (continued on page 7)

Gino's Pizza

545 Washington Ave.
Belleville • 751-5848

11:00am - 1:00am
Buy One - Get 2nd
1/2 PRICE
For Dinners & Pasta

Tuesday Special
Extra Large Pizza
\$3.95

WE DELIVER
751-5848

INTRODUCING NUTLEY SAVINGS' TELEPHONE RATE LINES

Save even more with Nutley Savings' New Telephone Rate Line. 24 hours a day, the current quotes on available rates on Certificate of Deposit, Money Market Accounts and Mortgage, Home Improvement and Auto Loans.

Our Special seven days a week phone lines give you up-to-the-minute information on current interest rates, qualifications and terms for all your financial needs.

FOR INFORMATION ON CERTIFICATE OF DEPOSIT AND MONEY MARKET RATES:
CALL THE SAVINGS ACCOUNT RATE LINE
661-3915

FOR INFORMATION ON MORTGAGE, HOME IMPROVEMENT AND AUTO LOAN RATES:
CALL THE LOAN RATE LINE
661-3917

Rate Lines listed with New Jersey Best Information

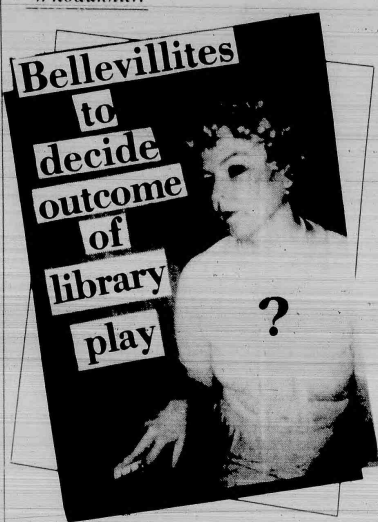
Nutley Savings

AND LOAN ASSOCIATION

celebrating
"Our first 100 years"

MAIN OFFICE:
371 Franklin Avenue • Nutley, N.J. 07110 • 861-3200
BRANCH OFFICE:
221 Washington Street • Newark, N.J. 07102 • 623-7090

'Whodunnit!'



It's a gimmick that's worked well on Broadway, and now it is being tried here in Belleville.

The Friends of the Belleville Public Library will sponsor the suspense play, "The Tape Recorder," at the library, 221 Washington Avenue, on Wednesday, Oct. 15 at 7:30 p.m. To register for the play, call the library at 450-3434. A \$1 donation will be collected at the door.

"The Tape Recorder" is a suspense play where the audience guesses what the ending might be, and a drawing will be held to determine the prize winner. Someone is trying to kill the secretary. Who is it? Do the police come in time? At an opportune moment, "The Tape Recorder" will be stopped and from all the clues given, the audience is asked to vote on how the ending might occur. After the play is over, a drawing will be held of all the participants who guessed correctly and a prize winner will be announced.

The author of the play, Pat Flower, was born in Kent, England, and then moved to Australia at the age of fourteen. A prominent novelist, she made her debut as a playwright in "The Best Short Play 1969" with her intriguing suspense drama "The Tape Recorder." She has also written many short stories, poetry and articles.

The founder and director of Act One Theatre Productions is Isaac Dostis, who has directed a variety of productions regionally and Off Broadway in New York City. He will appear in the play with Diana Sunrise, also the head of the Acting Center in Leonia, Brian McDaniel, and Anad Kaasi.

Poll finds voters look to newspapers

OKLAHOMA CITY — Fifty-eight and one half percent of Oklahomans said they rely on newspapers for their political information, a recent poll found.

The poll was commissioned by the Oklahoma Press Association, which wanted an answer to the question, "Where do Oklahomans get their information on political candidates and campaign issues?" The association hired political pollster Ken Bailey to find the answer. Bailey included the question in one of his candidate opinion polls.

The 58 percent that cited newspapers compared to 22.6 percent that cited television as the source of political information. Four and one third percent named radio.

The poll found that newspapers remained the number one choice in both metro and non-metro areas.

The association had earlier released results from a study conducted by Consumer Data Service that found 83.2 percent of Oklahomans regularly read their local newspaper. The Bailey poll was directed only at those people who were more than 50 percent certain they would vote in the

Aug. 26 Oklahoma primary election.

The poll also determined if Republicans or Democrats were the better newspaper readers.

In Oklahoma City 56 percent of the registered Republicans chose newspapers as their primary source for political information, while 52 percent of the registered Democrats gave the nod to newspapers. In Tulsa, 70 percent of the Republicans said newspapers were their primary source and 56 percent of the Democrats chose newspapers.

In the rural area, Democrats relied more heavily on newspapers as their source for political information. Fifty-nine percent of the rural Democrats chose newspapers while 52 percent of the Republicans selected local newspapers.

A total of 1,264 interviews — 737 Democrats and 527 Republicans — were conducted between July 26 and August 3.

The survey was another weapon the Oklahoma Press Association hoped to use in the battle to persuade political candidates that newspaper advertising was the more effective medium in reaching active voters.

Ben Blackstock, executive vice president of the association, said, "The media gurus and political advisers continually push gross rating points in their media plans. They look to broadcast to deliver these faceless GRPs. Well, GRPs don't vote."

"We have found through our various research studies that active voters, those people who regularly vote, rely more on newspapers for their campaign information than any other source," Blackstock said. "These people represent the target audience the politicians must reach."

The Oklahoma Press Association solicits newspaper advertising from candidates running for state-wide offices. Many of these candidates had committed huge sums of money to television and radio advertising prior to the primary election. The association believes the results from the survey greatly increased placement of political advertising space.

"We would have loved to have

the results from the Bailey poll earlier in the decision-making process," Blackstock said, "but the poll was designed to measure voter support for various candidates at a critical time leading to the August 26 elections. We were still able to improve our sales effort even with the sort time we had," Blackstock said.

"I would estimate that we increased our advertising billings by \$35,000 the week prior to the primary. That's money the broadcasters would have taken had it not been for our proof that newspapers reach voters better than the rest," he said.

With the Oklahoma primary over, the association is using the research information to capture a fair share of the advertising dollars leading to the November general election. Promotional pieces featuring the results of the Bailey poll and the Consumer Data Service study are being hand-delivered to every candidate.

Linguini goes country



Be adventurous during Gourmet Adventures Month and let your creative energies loose in the kitchen. Now that the weather is cooler, you can enjoy spending time in the kitchen. Experimenting with new dishes can be fun.

Try this Linguini with Country Style Sauce recipe, filled with the flavor of fresh vegetables and the authentic, homemade taste of Progo spaghetti sauce. To complete your meal serve a crusty Italian bread, a fresh tossed salad and a glass of red wine.

LINGUINI WITH COUNTRY STYLE SAUCE

- 2 tablespoons salad oil
- 1 cup sliced fresh mushrooms
- 1 cup sliced zucchini
- 1/4 cup chopped onion
- 1 medium clove garlic, minced
- 1 jar (18 1/2 ounces) Progo Spaghetti Sauce (1 3/4 cups)
- 1 cup cut-up cooked chicken
- 1 teaspoon lemon juice

Hot cooked linguini

1. In 10-inch skillet over medium heat, in hot oil, cook mushrooms, zucchini and onion with garlic until vegetables are tender, crisp, stirring quickly and frequently (stir-frying).
2. Stir in Progo sauce, chicken and lemon juice; heat through, stirring occasionally. Serve over hot cooked linguini. Makes 3 cups sauce or 4 servings.

art galleries royale

500 Struvsant Ave.
Lyndhurst, N.J.
438-3075

OIL PAINTINGS

Large Selection On Display
Largest Gallery in New Jersey

Lithographs 9 Prints
Photos Painted on Canvas
Stock & Custom Frames
Complete Framing Department

Elegant Fashions

in
LARGER SIZES

Exquisite Styles
Featuring Designer Labels

• ENTUE •

SUE WONG • JUDITH ANN

BETTINA - Leather & Suede

Sizes 14 to 26 (46)



Jinny
Res

Store Hours 10-6
Thurs. 10-4
Closed Sunday
Major Credit Cards Accepted

611 Bloomfield Ave. Montclair

783-8494

Amato claims Shapiro sought employee funds

Nicholas R. Amato, Republican candidate for Essex County Executive in the Nov. 4 general election, today said that temporary employees at the county jail complex in Newark had a \$125 ticket to a Peter Shapiro Campaign Kick off stapled to their paycheck on Thursday, Sept. 11.



Nicholas R. Amato

"This overt suggestion of 'work now and pay later' policy is an illegal practice of political solicitation and, I suggest, it is worth investigation by an appropriate law enforcement agency," Amato said.

"The 35 or so employees that received their pay checks with the tickets stapled to them are temporary, or provisional employees with no tenure or civil service protection and therefore subject to immediate dismissal. That's what

makes this political solicitation so odious," Amato said.

"The attached ticket even had a return envelope attached with Peter Shapiro's name on the front," Amato said, "with instructions to make their checks payable to 'Shapiro '86 Committee'."

Amato said he is calling on his opponent, to co-sign a pledge with him "not to solicit the county work force for political contributions."

"I'm also calling on Peter Shapiro to inform the temporary employees at the jail who had his fundraising ticket stapled to their paychecks to inform them in writing that their jobs are not in jeopardy," Amato said.

"I'm going to formally request that Peter Shapiro immediately agree not to solicit division and department managers, and all members of the county work force and to cease and desist from any current plans for solicitation of campaign contributions," Amato said.

"It's a policy that Shapiro has pretended to practice, a policy that he has not honored," Amato charged.

"Peter Shapiro has made it a practice to solicit and accept financial contributions from his department managers as well as other salaried employees," Amato said.

"I'm asking him now to agree not to do it any longer," Amato said.

"In the event of voluntary contributions from the county work force, I'm asking that Peter Shapiro further agree to return the money," Amato said.

You deserve some relief!

- Headaches
- Numbness in arms or hands
- Loss of sleep
- Stiffness, pain or tingling in the legs
- Stiffness or pain in the lower back
- Pain between the shoulders
- Painful joints

If you experience one or more of these danger signals, do not ignore them. Even if the pain disappears, you could suffer permanent, irreparable damage that might emerge again as a more serious health problem. You deserve some relief!



Dr. Anthony Balducci

— Call Today —
450-0086
Most Insurances Accepted

Family
Chiropractors



Dr. Vanessa Graniozo

392 Washington Ave., Belleville • 450-0086

BEN'S LOCK AND GLASS

(Formerly of Contemporary Glass)

- Plate & Safety Glass Replacements
- Commercial Door & Closer
- Repairs and Installation
- Replacement Windows
- Storm Windows & Doors
- Sliding Patio Doors
- Plexiglass
- Lexan
- Screens Repaired
- Custom Mirrored Walls
- Tub & Shower Enclosures
- Locks Installed
- Keys Made
- Furniture Tops
- Shutters

FREE ESTIMATES!

CALL TODAY 661-3857

Come Join Us For Our

GRAND OPENING PARTY

Sunday, Oct. 5th - 2-4 p.m.

Wine and Cheese

COMPLETE HAIR CARE

from the simple to the ultra-chic

- Nail Art With Original Designs
- Pedicures • Waxing
- Tanning Salon - SCA Wolfe System
- Swedish Massage By Appt.
- Professional Make-Up Application

Studio One

Hair Design

1095 Broad St. Bloomfield • 338-9777

The Belleville beat

Murder suspect apprehended

Jose Soto, 21, who is charged with the murder last month of a 22-year-old Newarker in Belleville, was arrested in Puerto Rico Tuesday, September 30, following a tip which New Jersey police authorities received.

Belleville Police sources told the Times that the tip was relayed to Puerto Rican police authorities who subsequently went to the place where Soto was hiding and arrested him without incident.

Soto is awaiting extradition hearings, and it is unclear at press time whether he will be tried for the Belleville murder of Robert Diaz in Essex or in Puerto Rico.

Two autos reported stolen

Two automobiles were reported stolen in town in the last week, including a 1979 Chevrolet Monday, Sept. 29 and a 1976 Oldsmobile Sept. 24.

Patrolman Louis Pomponio responded to a call at 17 North 7th Street, where Ramona O. Rego of Newark reported that the Chevrolet Monte Carlo she parked there while looking for an apartment had been stolen. The car was later recovered in Newark.

Regarding the Oldsmobile theft five days earlier, the theft occurred at 68 Watessing Avenue with Officers John Martucic and Thomas Agosta responding.

Katherine Padwelka told police that her 1976 Oldsmobile Cutlass was taken sometime between Sept. 20 and Sept. 25. Her car, like the Chevrolet, was also found later in Newark.

Police seek rape suspect

Jose Santiago of Cortlandt Street, is wanted for allegedly raping a 15-year-old Belleville resident, according to Belleville Police reports.

Santiago was originally arrested for sodomizing two Cortlandt Street boys but was released on bail pending trial. Upon his release, according to Belleville Police, a 15-year-old Belleville girl filed new charges against Santiago, who remains at large as of press time.

Purse snatching nets cash

Elaine Bradshaw, 52, of Belleville reported that her purse was snatched by a black male driving a blue car with New York license plates.

The incident, according to police reports, occurred Sept. 27 when Bradshaw was walking to her home on Dow Street. A man described as black, about 5'6" tall grabbed her handbag and got away in a blue car. Bradshaw said credit cards and other valuables were taken including an unspecified "large amount" of cash.

Officers Richard Fracone and Joseph Larceni responded. No arrests have been made.

Two break and entries reported

Washington Avenue was the scene of two break and entries during the last week, both at places of business.

According to Belleville Police reports, a laundromat at 580 Washington Avenue was entered from the rear at around 1:47 p.m. Sept. 24, when suspects attempted to break into four washing and drying machines.

Owner of the laundromat reported property damage from the prying but no monies were removed.

In another incident, Tim's Motorcross shop at 136 Washington Avenue was burglarized at about 4:08 a.m. Sept. 24 when the business was allegedly entered through a basement window.

The amount of valuables taken from the shop was unknown at press time, pending an inventory review by store owner Ronald Eunice.

By Christopher Bifani

Briefly deadline

The deadline for Belleville Brief releases is the Monday before each Thursday issue.

To make sure your releases reach the newsroom in time, mail by the preceding Friday to: The Belleville Times, Belleville Briefly, P.O. Box 56, Belleville, N.J. 07110.

(continued from page 5)
to be written off as a total waste, we should attempt to be more careful the second time around. We can not afford another year of monetary allocations by the commissioners to support their obsession of having to build something just for the sake of building.

Cost is directly related to size, and in that regard, the planned police complex is second to none. The commissioners, through their actions, have told the citizens of Belleville that we need a new police complex that is almost twice the size of the present town hall. The planned station would be a three-story, 24,000 square foot monstrosity where prisoners can be booked in splendor for the cost of a mere \$5 million.

If we face reality and finally construct a complex that is within

Citizen Forum

our means, then, and only then, will all sides be served justly. The taxpayers can never accept anything short of total candor and accountability on the part of the commissioners in regard to this new complex. Unfortunately, straight answers and factual information is rarely derived from the Township Fathers.

A few years ago, a new police complex was being considered for the township. At the time plans were drawn that called for the building to be 24,000 square feet, and construction at the cost of \$1.6 million. Even allowing for increased building costs, a new police complex should be built for no more than \$2 million. If we chose to decrease the size, the price should drop accordingly. These figures were not derived from speculation. They are on file at the Town Hall for all who wish to see them.

How then do we answer the \$5 million question? Which option do we choose, if we choose any? The commissioners need to be told how you, their bosses, feel in regard to this situation. Come and give your opinion at the next Township Meeting, or at the Planned Board Meeting scheduled for tonight at the High School. The Planning Board will be reviewing the architect's plans for the complex, and you will have the opportunity to speak out for what you believe in.

Public opinion can never be silenced if it forms the basic cornerstone of our Constitution, freedom of speech. Men and women have died to preserve this very staple of human freedoms, and we should not do them a disservice by sitting home and saying nothing.

Crowding in town jail a strain on the force

By Christopher Bifani

The situation is bad and getting worse.

Due to overcrowding at the Essex County jails, which in turn is due to overcrowding in New Jersey state jails, Belleville Police Chief George Lister says the township's jail facilities are handling more than they can bear.

According to Lister, the township, as of Tuesday, September 30, was holding seven prisoners, including one woman. And although all are "technically" Essex County prisoners, Lister says that Belleville has had to hold onto them because there is simply no room downtown to take them off Belleville's hands.

The result is that Belleville is holding three prisoners for more than a month — and one for more than 47 days.

It's a problem, Lister explains, because the effort involved in caring for the prisoners is a big drain on manpower.

Since there are now shower facilities at the station, prisoners must be transported to a fire house on William Street.

Lister added that the female prisoner, who has been incarcerated in a holding cell for six days, doesn't even have washing facilities in her cell. Thus, she has to be removed from the cell to wash or use the toilet.

Lister is hopeful that the female prisoner will be removed by week's end.

Because the Belleville town jail is designed to hold prisoners only for brief periods of time, there is no kitchen or staff to prepare meals.

The Chief said the prisoners have been living on a diet of "sandwiches" and more "sandwiches." In the morning they get an egg sandwich, at lunch a sandwich or soup, and for dinner a patrol car is usually dispatched to McDonald's where two hamburgers are purchased for each prisoner.

The prisoners were complaining about the food, Lister said, smiling, "so last night we got them Big Macs instead."

However, the chief also underscored the seriousness of the problem by pointing out that keeping prisoners for long periods of time in a strain on the budget as well.

And, on the county level at least, he doesn't see things getting too much better in the near future.

"The Assembly just passed a \$4 million bill to put more police in the streets to fight crack. But where are they going to put all the prisoners?"

New building will have better facilities

Lister said the long-awaited Belleville Public Safety Building, which is expected to be completed in 1988 or 1989, is designed to have shower facilities for both male and female prisoners, a feature which will eliminate the chore of transporting prisoners outside of the building in order to get them showered.

Crossing guard shortage

This week, the shortage of Belleville crossing guards forced up to five patrolmen to fill in, taking away from time spent patrolling the streets, says Officer Vincent Cosentino.

The Belleville Police Department urges all residents seeking

part-time work to call 450-3333 for an application for employment as a crossing guard.

Starting pay is \$4.85 per hour and the work is suitable for mothers, retirees and other adults seeking to supplement their income.

GRAND OPENING



Ladies Fashion Boutique

Dresses - Sportswear - Evening Wear

Costume Jewelry - 14 & 18 Kt. Gold

Shoes - Accessories

Contemporary Clothing at reasonable prices.

206 Franklin Avenue
Nutley, New Jersey 07110
(201) 235-0381

PLASTIC SLIPCOVERS

CUSTOM MADE

SPECIAL OFFER 1, 2, 3, 4, 5, 6, 7, 8, 9, 10, 11, 12, 13, 14, 15, 16, 17, 18, 19, 20, 21, 22, 23, 24, 25, 26, 27, 28, 29, 30, 31, 32, 33, 34, 35, 36, 37, 38, 39, 40, 41, 42, 43, 44, 45, 46, 47, 48, 49, 50, 51, 52, 53, 54, 55, 56, 57, 58, 59, 60, 61, 62, 63, 64, 65, 66, 67, 68, 69, 70, 71, 72, 73, 74, 75, 76, 77, 78, 79, 80, 81, 82, 83, 84, 85, 86, 87, 88, 89, 90, 91, 92, 93, 94, 95, 96, 97, 98, 99, 100

NOW ALSO AVAILABLE

All Better Quality Grades, Colored Covers, and Custom Color - Washable Linen

Free Quote - Ask About Our Payment Plan

Import about our 50% REBATE. FREE! (Not with taxes, delivery, and handling charges.)

Check Our Reputation With The Better Business Bureau (800-542-3021)

GARDEN STATE PLASTIC COVERS CO., INC.

CALL 352-0555 - SAVE 352-0599

DR. RALPH J. ATTANASIO D.D.S.

has returned to his full time private practice at the original location

517 Roseville Avenue
Newark, N.J. 07107

Hours By Appointment • 485-0545

Dr. Attanasio is no longer practicing dentistry in association with Group Dental Associates of Nutley



"WE WORK WELL TOGETHER"

Old Fashioned Expertise and High Efficiency Service
Full Service Oil Company

- Plumbing & Heating Contractors
- Automatic Delivery • Budget Payments & Cash Discounts
- Design & Service Gas/Oil Heating Systems
- E-Z Credit Approval - 100% Financing

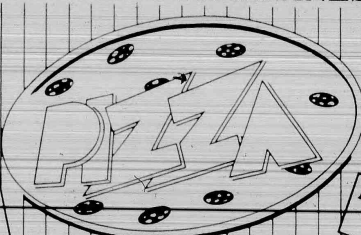
WEIL-McLAIN
HIGH EFFICIENCY
HEATING SPECIALISTS

CEDAR HILL
OIL CO.
485-6400

FOR
PROMPT
SERVICE

PAR ENERGY
485-6404

NOW OPEN FOR BUSINESS



MAURO'S
Pizzeria & Restaurant
558 Franklin Ave. Belleville
Phone 751-6016
Open: Mon-Sat. - 11 a.m.-11 p.m.

REGULAR
PIE
5"

MUSSELS
2"



Big Columbus Day Parade coming Oct. 12

(Continued from page 1)
of the American immigrants' dream, to see their children established in a free country, able to prove their capabilities.

Charles Piro is a member of the Nutley Board of Education, and owner of the Yantacaw Liquor and Delicatessen Store. Jay Piro also owns his own business, the Franklin Men's Shop.

Maternal grandparents John and Louise Pandolfi arrived in Nutley from Naples, settling in the Big Tree neighborhood. Paternal grandparents Natale and Anna Piro came from Calabria, and settled in the Avondale section.

The relationship between the two Italian neighborhoods was like the Hatfield and the McCoy

feud. When I married a girl from Big Tree, Carol Perna, it was quite an unusual event," Piro said.

Piro's father, Joseph, worked at the hat factory in Avondale, where many other Italian-Americans were working — until the disastrous day in the 1930s when the factory burned down.

"This was a terrible blow to the Italian community. And it convinced my father to go to business school. He became an automobile salesman."

Joseph Piro died at the age of 49, and his widow raised her three sons to adulthood.

After graduation from Nutley High School, James Piro attended Seton Hall College and Rutgers

Law School, passing the Bar in 1968, and serving as judicial secretary to Judge John Crane, another Nutley resident.

He served as Deputy Public Defender in Passaic County, handling homicide cases, and in 1972 he became the youngest person ever appointed Nutley Town Attorney, by then mayor Carmen Orechio.

That same year, he won election to the Board of Education — "with the highest vote ever recorded."

His vote-getting abilities won him a seat on the Essex County Board of Freeholders in 1978, when he was the only Republican to win office in the county elec-

tion.
In 1981, he was campaign manager in Essex County for Governor Thomas H. Kean, and subsequently, he was appointed counsel to the Passaic Valley Sewerage Commission, a post he still holds.

He also served as Republican County chairman, and is now Republican town chairman.

Awaiting his appearance at the head of the parade, which may include over 4,000 marchers, will be his wife and three daughters, Jamie, Jennifer and Jodi.

"We have taught the children that we are foremost Americans, and that we have a glorious ethnic heritage as well."

"And this parade is a tribute to all of that."

Jack Nosti, parade chairman, reported that the bands will include an Army unit, the Belleville, Nutley and Orange High School units, bagpipers from the Friendly Sons of the Shelleagh, and a Dixieland Band funded by Assemblyman John Kelly.

or march in the parade should contact Joan Carletta, parade chair, at 759-5946. Unmarried women between the ages of 16 and 20 interested in entering the "bella signorina" of Nutley contest should submit resumes and photos to Mary Romagnoli, 65 Grant Ave., Nutley, before Sept. 20.

At 3 p.m., a post parade party will be held — an open house for the public — at Alan's Place on Franklin Avenue.

The second annual Columbus Day ball will be held Oct. 3 in the Chandelier Restaurant, 340 Franklin Ave., Belleville. Tickets at \$17.50 per person may be ordered through Joe Grande at 450-3499.

It will commence at the Belleville High School stadium, move up Joramemon Street to Franklin Avenue and end at High Street.

The reviewing stand will be at the Nutley Savings and Loan Building, 370 Franklin Avenue. Groups wishing to enter floats



Couldn't do it without 'em — Belleville/Nutley Parade Committee took time out from a busy schedule of parade preparations to pose for the town newspaper. Pictured standing (l-r) are Jimi Donadio, Thomas Salzano, Commissioner Joseph Grande, Fred Carletta, Belleville Chairman Joseph Donato, Bob Buscunolo, Frank Marzano, Commissioner Frank Coccola, Jack Nosti, Commissioner Peter Scarselli, Ray Piccattello, Joe Strigari, and Nutley Chairman Joseph Romagnoli. Seated (l-r) are Mary Romagnoli, Joyce Donadio, General Chairman Joan Carletta, Viola Narucki and Helen Donadio. (Photo by Jaye Tarantino)

A life policy that can put you in charge.

With Allstate Universal Life, as long as you qualify, you can raise or lower your premiums and coverage as your needs change. Plus, your cash value grows using current competitive rates.

Jim Norton August Bianculli
369 Broad St.
Bloomfield, N.J.
429-0335

Allstate
A member of the Allstate Insurance Company

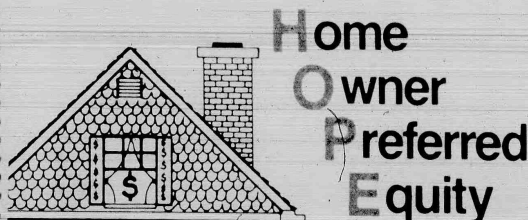
Optional in most states on Allstate Insurance Company Standard and Deluxe Homeowners Policies.

FAST ACTION— ONE WEEK APPROVAL!

SPECIAL LOW RATE

**NO LEGAL FEE!
NO APPRAISAL FEE!
NO POINTS!**

**Only
The Bank with Heart
gives you H.O.P.E.™**



H.O.P.E.™ is your personal line of credit from The Bank with Heart. It lets you turn your house into cash—for any purpose. Call our H.O.P.E.™ line for more information.

**FOR FAST ACTION,
CALL TOLL FREE 1-800-THE-LOAN
THE TRUST COMPANY**

OF NEW JERSEY
THE \$ILLION DOLLAR BANK WITH HEART

Executive Office: 35 Journal Square, Jersey City, N.J. 07310-1000

Branches throughout Bergen, Essex, Hudson, Middlesex, Morris & Sussex Counties

Before you paint yourself into a corner, call us.



FIRST CENTURY REAL ESTATE

Put Number 1 to work for you.

692 Passaic Avenue
Nutley, New Jersey 07110
235-0440

EACH OFFICE IS INDEPENDENTLY OWNED AND OPERATED

Ed Cavanagh 'in training'



Ed Cavanagh

Ed Cavanagh of Nutley recently completed a training program designed to increase agent effectiveness in the real estate market. Cavanagh, an associate at Reilly Realtors in Belleville, began the course in July.

"Training is an on going necessity in real estate," said Cavanagh.

Ed, his wife Catherine and their six children have lived on Weston Street for the past 18 years. Ed's background includes a degree in finance and investment from Fordham University.

DENTALLY SPEAKING
By Drs. James D. Muglia and Paul N. De Malo

Mr. W. of Montclair writes: "I am a senior citizen and have about half of my teeth left. Should I get them all pulled and have plates made?" Mr. W., if your remaining teeth are still firm please do not have them extracted. You'll be more comfortable with having several teeth replaced rather than all of them replaced.

Also there is a period of adjustment to new dentures which can be from a couple of months to several months. When you have some of your own teeth present this period of adjustment to new teeth is much shorter. However, Mr. W. if your own teeth are loose and causing you discomfort than it may be wise to have them removed and dentures inserted. Please talk over your problem with a dentist and understand both alternatives completely. Thank you.

Please address all inquiries to:

Send Inquiries To:
Dentally Speaking
671 Franklin Avenue
Nutley, N.J. 07110
667-4421



BLOOMFIELD
Room For You & Your Vehicles
This lovely Col. offers LR, DR, lge. mod kit, 4 BR & 1 1/2 baths + 3 car gar & DW to accommodate sev. cars. Call today.

MARGIE McDONALD
Realtor

316 Broad St., Bloomfield
429-7372

Crime war declared

(continued from page 1)

drug education program, which the commissioner said is being coordinated by Detective Joseph Rottunda.

DiRuggiero said the focus of this program will be to educate the younger students — fourth, fifth and sixth graders — since children are experimenting in drug abuse at younger ages than ever before.

Narcotics unit

Commissioner DiRuggiero told the Times he is stepping up efforts to fight drug abuse with a reactivated narcotics unit.

However, this program is still being worked out and he could not fully elaborate at presstime.

Citizens helping out

Perhaps the most substantial precedent in the police department's crimefighting recipe is the people — those Bellevilleites who are helping the police by joining the neighborhood watch program, the auxiliary police force, and who are just keeping an eye open on suspicious activity.

The neighborhood watch program, which is being coordinated by Detective Fred Puleo and Captain Robert Petrillo, has been growing in the face of rising crime.

More people are coming to the meetings now, DiRuggiero said, for all departments.

Foot patrols

Early last month, foot patrols were reinstated on Washington Avenue, Franklin Street, Union Avenue and as needed in other sections of town.

As reported in the Times, merchants, citizens and leaders of civic groups had all joined in calling for a revival of foot patrols and according to Chief Lister, the response from the community has been positive.

Chief Lister says he has the manpower to implement walking assignments through the Christmas season.

A Drug Education Program is a significant step for the Belleville Police Department is a stated, and he credited the efforts of the police force as well as the citizens with helping to get the

Vecchione named to United Way cabinet

Joseph A. Vecchione of Belleville has been selected as one of 11 members of the 1986-87 Campaign Cabinet of the United Way of Essex and West Hudson. The chairman of the organization's public relations committee, he is in charge of communications for the fund drive.



Joseph A. Vecchione

Vecchione is vice president for public relations at the Prudential Insurance Company of America in Newark. A graduate of Fairleigh Dickinson University and former reporter for the Star Ledger and Newark Evening News, Mr. Vecchione is a member of the New Jersey Chapter of the Public Relations Society of America, which has designated him an Accredited Public Relations professional. In addition, he is an associate member of the New Jersey Press Association and a trustee of the Clara Maass Medical Center.

The United Way of Essex and West Hudson supports 76 human care agencies whose objective is to improve the quality of life in the community. The goal of the 1986-87 campaign is to raise more than \$10 million.

word out.

"We had quite a crowd at the last meeting," DiRuggiero added.

The auxiliary police force, however, has not been faring so well. The ranks of this volunteer arm in Belleville's public safety operation has been dwindling from a high of about 60 as recently as 1977 to about 15 members today.

An article on the auxiliary police appears elsewhere in this edition.

Crimebreaker

One well-publicized example of the Belleville Police Department's belief that prevention is the best way to fight crime is the Crimebreaker column which appears in the Belleville Times courtesy of the police department.

Under the coordination of Detective Puleo, the department has provided the Times' readership with hints ranging from protecting children's bicycles to safe guarding against child abuse.

In addition, there are other measures being taken by the department to increase Belleville's crimefighting capability.

More police officers are being hired, and five new police cars are coming shortly. Within the next few years, the long awaited Belleville Public Safety Building is scheduled to be completed.

Will these new measures, combined with existing crimefighting efforts, break the cycle of rising crime in Belleville?

Only time and the next New Jersey State Police Report, will tell. But in the meantime, the Belleville Police Department reminds all citizens:

If you see something suspicious, pick up the phone and call the police.

Clara Maass Hotline

Respiratory care month highlighted by Tel-Med

The month of October 1986 has been designated National Respiratory Care Month. Clara Maass Medical Center in Belleville offers information about respiratory problems through its TEL MED service, which is a collection of health information tapes provided by the Medical Center as a free community service.

Interested persons can call 751-7000 and ask for any one of the respiratory tapes by number for a brief description of the problem. The following tapes are available:

- No. 526: Bronchial Asthma
- No. 581: Chronic Cough
- No. 90: Hay Fever
- No. 38: Influenza: What We Know About It
- No. 13: Pulmonary Emphysema
- No. 582: Shortness of Breath
- No. 583: Tuberculosis

TEL MED has over 325 tapes available on a variety of health-related topics. To receive a free catalog of tapes, please send a self-addressed, stamped envelope to the Clara Maass Public Relations Department, 1 Franklin Ave., Belleville, 07109 or call 450-2267.

New Jersey State Licensed
Residential Health Care Facility

*Colonial Sheltered Care Home
of Bloomfield, Inc.*



A FINE HOME FOR
ELDERLY FEMALE RESIDENTS

90 Williamson Ave.
Bloomfield, N.J. • 743-4143

—Grand Re-Opening—

GOOD HEALTH PHARMACY
(formerly Laterza's)

309 Union Ave. Belleville
759-2761

- 50% off all men's & women's fragrances
- 25% off all vitamins
- 20% off entire store stock including:



Bill Lynch

- Health Needs
- Baby Needs
- Batteries
- Film
- Toiletries...
- and many more items

Free Delivery



Kids can-can-do — School 10 kindergarteners performed a series of routines for the Board of Education and audience this past Monday, including this delightful skit which received an appreciative round of

applause. Board of Education President Phil Linfante praised the youngsters, as well as the teachers and staff of School 10 for showing "that good things are happening in Belleville schools." (Photo by Christopher Bifani)

Tax savings is topic

Marc Berman to speak in 'Ask a Lawyer'

Marc Berman, an associate in the Roseland law firm of Cole, Schotz, Bernstein, Meisel & Forman, is among members of the Essex County Bar Association who participate in "Ask a Lawyer," a series of public information sessions in cooperation

with local adult schools and community groups.

Berman, a resident of West Caldwell, will discuss Wills, Trusts and Estates: How to Maximize Your Tax Savings, at the Belleville Library, 221 Washington Street, on October 6 at 7:30 p.m.

His presentation, which will be followed by a question and answer session, will discuss the benefits of drafting a will and the tax savings that may result. Estate planning will be reviewed including lifetime and testamentary trusts, insurance policies, pensions plans and gift

giving.

Berman graduated from Columbia University and Rutgers University School of Law.

For further information contact the Essex County Bar Association at 622-6207 or the Belleville Library at 450-3434.

Sen. Carmen Orechio gets the 'Italian Boot'

State Senator Carmen A. Orechio will be among three recipients of the Golden Boot award of the "Terra Oggi Domani"

(Yesterday Today Tomorrow) Italian association during a ceremony Oct. 4 at the Birchwood Manor in Whippany.



Carmen A. Orechio

Orechio is being honored as a philanthropist. He has been active for many years in organizations benefiting Italian-Americans.

Orechio will be cited along with Peter Sammartino, founder of Fairleigh Dickinson University and James Emiliano, a New Jersey businessman. Sammartino will be honored for his contributions to Italian-American culture, and Emiliano will be honored for his performance in the field of industry.

For tickets to the awards ceremony, call Anthony Colchio at 227-3355.

264 Belleville Ave.
Bloomfield

MARZULLI
REALTOR

RESIDENTIAL/COMMERCIAL/BUSINESS SALES
APPRAISALS & PROPERTY MANAGEMENT

FREE
MARKET
ANALYSIS

Serving:
BLOOMFIELD • NUTLEY
IRVINGTON • GLEN RIDGE • NEWARK

APARTMENT
RENTALS

Raymond P. Marzulli Co., Inc.

743-2300

The Choice of the People

7 Days
24 Hours
Delicious
Salad Bar
Italian
Specialties!
Steaks & Chops

All baking done on premises • Homemade pastries
Children's Menu Available
Special Breakfast Menu 8-11 a.m.
Daily Businessman's Lunch 11 a.m. - 3 p.m. Salad Bar Open 11 a.m. - 10 p.m.
ALA CARTE and COMPLETE DINNER MENU

We're Always Open
WILLIE'S
DINER-RESTAURANT

9 State St., Bloomfield Call 748-7414

REFRIGERATOR PERRY is the Bears Triple-Threat.

Empty 'The Refrigerator'
at FOR PETE'S SAKE

Monday Nite Football
Kickoff 9 P.M.
Monday Sept. 8th

153 Belleville Ave. Belleville 759-1516

Events in the Area

Support groups in the area

Toughlove, for parents who have problems with their teens' behavior, 7:30 p.m. Thursday, Parks Dept., 44 Park Ave. Nutley, 743-5511.

Living with Cancer, for cancer patients and their families, 7 to 9 p.m. third Wednesdays, Mountsinde Hospital, Montclair, 429-6140 or 429-6128.

Recovery Inc., a community mental health self-help group for nervous persons, 7:30 p.m. Wednesdays, Parks Dept., 44 Park Ave. Nutley, 766-7466.

Make Today Count, a support group for patients and families dealing with cancer and other life threatening diseases, 7 p.m. Mondays, Clara Maass Medical Center, Belleville, 450-2230.

UNHOOKED for drug and alcohol abuse, 643-5050 noon to 7 p.m. Monday through Friday for New Jersey treatment program referrals and substance abuse information. Confidential.

Women's support group sponsored by The League for Family Service of Bloomfield and Glen Ridge. Women's issues and problems. Ongoing, 743-3737.

Organizations for area singles

New Jersey Moonrakers, a club catering exclusively to tall and single adults, meets 8 to 10 p.m. every second Tuesday of the month at the Meadowlands Hilton, 2 Harmon Plaza, Secaucus. All ages, \$3 for guests, free for members. 298-0664. Statue of Liberty Celebration Dance 8 p.m. Sept. 26 at the Treadway Saddle Brook. No minimum height required for this dance. \$7 per person. Cash bar, music by DJ. Come dressed as one of your ancestors.

The Singles Connection, widowed, divorced, separated first and third Thursdays, 8 to 11 p.m., Grace Episcopal Church, 200 Highland Lane, Nutley. Rap groups, music, dancing. \$3, 235-1177.

New Jersey Moonrakers, tall and single adults, 8 to 10 p.m. second Tuesday, Meadowlands Hilton, 2 Harmon Plaza, Secaucus. Height requirements \$3 per guest, members free. 298-0664.

Jewish Singles Friday night dance, 20's and 30's, 797-6877.

A New Beginning pub mixer at Allan's Place, 522 Franklin Ave., Nutley, second and fourth Wednesdays after 9 p.m. Lite music, drinks, conversation. 661-3357 or 667-9898.

Singles dance, 7:30 p.m. to 12:30 a.m. Wednesdays Springburn Manor, 2800 Springfield Ave., Union. Social, ballroom dancing, Orchestra, DJ, big band sound.

Success Oriented Singles (SOS) meets 8-15 p.m. the first and third Fridays of the month. For more information, call 751-1419 or 226-5999.

Parents Without Partners, Liberty Chapter 1044 North Arlington will hold an orientation for prospective new members 7:30 Oct. 6 at North Arlington Elks, 129 Ridge Road. Guest speaker at 8:30 p.m., general meeting at 9 p.m. For more information, call 961-0925.

The ABC (Along by Choice or Chance), 30 Plus group of the Passaic/Closter Y.M.-Y.W.H.A. meets Tuesday evenings at the Y, 199 Siles Ave., Clifton. For more information, call Janet Packer at 779-2980.

Upcoming class reunions listed

Belleville High School Class of 1976, November, 1986. Anthony Nicotia, 751-6474, Debbie Current, 751-8584, Kathy Gino, 429-7347, Diane DeMayo, 736-2426.

Nutley High School Class of 1966, Alan DeFabbio, 661-2110 or Russell Catanzarite, 661-2093.

Belleville High School Class of 1946 Oct. 24. Friar Tuck Inn, Route 23, Cedar Grove. The Reunion Committee. Class of 1946, c/o Nino's Candy and Cards, 548 Union Ave., Belleville, 07109.

Belleville High School Class of 1966 Nov. 29, The Aspen, Parsippany, P.O. Box 666, Belleville.

Nutley High School Class of 1956 this November. Rose LaDolcetta Helm, 338-8614.

Belleville High School Class of 1941 Nov. 15, Friar Tuck, Cedar Grove. Lloyd Newsome, 65 Hawthorne Place, Montclair, 07042, 795-9152.

Barringer High School, Newark, Classes 1940 through 1945, mid-November, 226-5470 or 239-7385.

West Side High School, Newark, Classes of January and June 1936 seek members for reunion. Names, addresses and telephone numbers to Guidance Dept., West Side High School, 403 South Orange Ave., Newark, 07103.

Belleville High School Class of 1937, looking for classmates for a 50th reunion. Call class president Frank "June" Carragher, 755-5820, Bus Gausepohl, 748-5297, Bob Shaughnessy, 759-2506 or Audrey Lutz, 226-1872.

Nutley High School Class of 1976, plans a reunion 7:30 p.m. Nov. 29 at the Landmark Inn, E. Rutherford. For information, call Joanne Cecchiola/Cancimino at 235-0697 or Kim McDonald/Cassimino at 667-2004.

Nutley High School classes of January and June 1937 seek members for a 50-year reunion. Contact Julia Gidycz Fritchman, 625 Centre St., Nutley, 661-0677 or Maris Koch MacKay, 181 River Road, Apt. 5G, Nutley, 667-3871.

Barringer High School classes of 1940 through 1945 are planning a reunion Nov. 1 at the Birchwood Manor, Whippany. Contact Rose Viviane Del Presto, 105 Avon Drive, Essex Fells, 07021 or call 226-5470 or 239-7385.

Nutley High School Class of 1951, will hold a reunion Nov. 29 at the Ramada Inn, Clifton. Seeking class members. Peter Marshall, 933-4815.

Oktoberfest smorgasbord Oct. 18

St. Paul's Congregational Church, Franklin Ave. at St. Paul's Place, Nutley, will hold its third annual smorgasbord, an Oktoberfest, Oct. 18. Seating at 5 and 7:30 p.m. Many traditional German dishes. For tickets at \$7.50 for adults, \$3.75 for children under 12, call 667-1321.

Flea market, antiques, crafts

The Nutley Historical Society will hold its 8th annual flea market, antiques and crafts sale 10 a.m. to 5 p.m. Oct. 18 at the Nutley Museum, 85 Church St. Homebaked goods, farm-fresh vegetables, food and refreshments also available. For space reservations, call Ruth at 667-9193 or Audrey at 667-2660 before Oct. 15.

Country Fair at Montgomery

Montgomery Presbyterian Church, Mill Street and Montgomery Place, Belleville, will hold a country fair 10 a.m. to 4 p.m. Oct. 18. Craft items, Good as New, baked goods, snack bar, children's wishing well.

Knights, Columbiettes set trip

Bloomfield Knights of Columbus and Columbiettes are sponsoring a one day trip to the Amish country in Pennsylvania. Donation of \$33 includes bus, breakfast, three hour guided tour and supper at Good and Plenty. For reservations and more information, call Rose Ruffalo at 743-9688.

Dessert, card party Oct. 16

The Lions Auxiliary of the Nutley Lions Club will hold its annual dessert and card party 8 p.m. Nov. 7 at the Nutley Elks Club, Chestnut St. Proceeds will benefit the eyesight program. For tickets or information, call Gloria at 667-7089.

St. Peter's communion breakfast

St. Peter's Rosary Confraternity will sponsor its annual communion breakfast Oct. 5 at the Forest Hill Field Club, 9 Belleville Ave., Bloomfield, immediately following the 8:30 a.m. Mass at the church. Tickets are \$8. Rosarians and all members of the parish invited. Call Mary Manthey at 751-0813 or Marge Waldron at 759-9019.

Kid Kats Cafe Talent Show

The Nutley Parks and Recreation Dept. and the Nutley Junior Woman's Club are sponsoring a "Kid Kats Cafe Talent Show" 7:30 p.m. Nov. 14 at Franklin Middle School. Children 3 to 15 may enter in categories of tap, jazz, ballet, lyrical, contemporary and acro-gymnastics. Students can enter more than one category and will be judged against their own age group. For more information, call Marcia Wasvary at 667-2241 or Marie Vicchiarello at 667-3731.

Rose Casale Memorial Dinner

The annual Rose Casale Memorial Dinner will be held 5 p.m. Oct. 26 at Miles A. Suarez Post 711, 5 F.W. 369 Broughton Ave., Bloomfield. Roast beef, turkey, elegant desserts. Proceeds to cancer aid and research. For tickets at \$9.50 for adults, \$5 for children, call Marion Hart at 338-8513 or Barbara Ellmer at 338-4256.

Medical assistants open house

The Essex Chapter of Medical Assistants will host an open house 3 to 6 p.m. Oct. 8 in the Doctors' Lecture Hall, Clara Maass Medical Center, Belleville. For more information, call Joy Hafer at 762-1144.

Harvest Masquerade Ball Nov. 8

The Nutley Junior Woman's Club will sponsor a Harvest Masquerade Ball dinner dance 7:30 p.m. to midnight Nov. 8 at the Elks Club Entertainment. For tickets at \$22.50, call Pat Backman at 235-1485 or Mary Ellen Matarazzo at 667-6167.

Grey-Rose dinner dance Oct. 11

The Grey-Rose Social Club will hold its seventh dinner dance 7:30 p.m. Oct. 11 at the Nutley Elks Club, 243 Chestnut St. Tickets at \$20 may be obtained from Nicholas Dacia Jr. at 667-5735 or Vincent Parigi at 235-9186. Open to former or current residents of Greylock and Roosevelt avenues, Belleville.

Multiple sclerosis conference

The first statewide conference on multiple sclerosis, "Positive Approaches to Multiple Sclerosis," will be held Nov. 1 at the Berkeley-Carteret Hotel, Asbury Park. Cost of \$15 includes registration and lunch. Scholarships and brochures available through local MS Chapter offices. For more information, call June Halper at 837-0515, Liz Power at 796-0028 or June Neopolitan after 4 p.m. at 256-2049.

Rummage sale Oct. 6 and 7

The ladies of the Church of the Ascension, Berkeley Avenue and Montgomery Street, Bloomfield, will hold their annual rummage sale 9 a.m. to 5 p.m. Oct. 6 and 9 a.m. to noon Oct. 7. Small furniture, clothing, household items, jewelry.

Rosary Society barn dance Oct. 4

The Rosary Society of Immaculate Conception Church is sponsoring a barn dance 8 p.m. Oct. 4. Music by the Farmer Boys. 21 years and older only. Tickets at \$8 may be purchased at the rectory, 390 Woodside Ave., Newark. No tickets sold at the door.

Guild serving spaghetti Oct. 18

The Belleville Reformed Church Women's Guild for Christian Service is sponsoring a spaghetti dinner 6:30 p.m. Oct. 18 in the church's fellowship hall, corner of Main and Rutgers streets. Spaghetti, sausage, meatballs, Italian bread, salad bar. Reservations must be made by Oct. 11. Seating limited to 100 people. Call 751-2262 or 759-4039 for tickets at \$5 for adults, \$3 for children 10 and under.

Craft Show at Mt. Carmel Oct. 18

Our Lady of Mount Carmel Church, 120 Prospect St., Nutley, will hold its annual craft show 10 a.m. to 4 p.m. Oct. 18. Admission: \$7.50 for adults, \$2.50 for children. Soup and sandwiches available 11 a.m. to 3 p.m.

Fall attic sale Oct. 3, 4 at Wesley

Wesley United Methodist Church will hold its annual fall attic sale Oct. 3 and 4 in the church hall, 225 Washington Ave., Belleville. Children of the church will have their own table of items for sale on Saturday.

Michael Lenson art on exhibit

Michael Lenson painting retrospective 1938 to 1970 will be exhibited in the Ben Shahn Galleries, William Paterson College, Pompton Road, Wayne through Oct. 31. Mon. and Wed., 9 a.m. to 8 p.m.; Tues., Thurs. and Fri., 9 a.m. to 5 p.m.

50's/60's dance at St. Val's

St. Valentine's PTA will hold a 50's/60's dance to benefit the school 8 p.m. to 1 a.m. Oct. 25 in the church hall, 236 Hoover Ave., Bloomfield. Tickets at \$15 include hot and cold buffet, D.J., contests and set-ups. Tickets available after Mass Oct. 18 and 19 or by calling Linda at 893-1423 or Becky at 748-0758. No tickets at the door.

Card party Nov. 7 at Nutley Elks

The ladies auxiliary of the Nutley Elks Lodge 1290 will hold its annual scholarship card party 8 p.m. Nov. 7 at the lodge, 242 Chestnut St. For tickets at \$4, call Terry Oriolo at 964-1062 or Lillian Sisto at 667-4183.

Alzheimer's support group

The Clifton Alzheimer's Disease Family Support Group will meet 7:30 p.m. Oct. 13 in the offices of the Clifton Family Practice, 716 Broad St. All caregivers welcome. For more information, call 472-7414 or 478-0564.

Craft show/flea market Nov. 8

St. Valentine's School PTA will hold its fifth annual indoor craft show/flea market 10 a.m. to 5 p.m. Nov. 8 at St. Valentine's Church Hall, 236 Hoover Ave., Bloomfield. For tables at \$15, call 743-1490 or 338-9076.

October Sundays at Oakeside

Oct. 5: 1 to 4 p.m., meet the artists: Heinz and Dorothea Otto who will exhibit their photography through Oct. 26. Free.

Oct. 12: 1 to 4 p.m., outdoor slave festival. Folk dancing, singing and music of Russia and other slave countries. Free.

Oct. 19: festival rained.

Oct. 26: 2 p.m., storyteller: Haunted Inns of Great Britain. Chilling true tales. Limited seating. Free.

All events at Oakeside Bloomfield Cultural Center, 240 Belleville Ave.

Post hosting Italian Night feast

Miles A. Suarez VFW Post 711, Bloomfield, is serving an Italian Night feast Oct. 11 at the post home, 369 Broughton Ave. All food prepared by chefs of the post. For ticket information, call Peter Paone at 483-8081, Carl Capasso at 743-4880 or John Mooney at 338-8053.

VFW Chinese auction Oct. 19

The ladies auxiliary to Stuart E. Edgar Post 493, Veterans of Foreign Wars, will hold a Chinese auction Oct. 19 at the post home, 271 Franklin Ave., Nutley. Proceeds to the group's cancer fund.

Old Guard of Belleville meets

The Old Guard of Belleville meets the 2nd and 4th Tuesdays of each month at Fawcett Church hall, Union Ave., Belleville.

Huge garage sale set Oct. 4

The World's Largest Garage Sale will be held 9 a.m. to 4 p.m. Oct. 4 at 553 Prospect St., Nutley, to benefit the Grace Church Organ Restoration Fund. Items from many parish families.

Roche Retirees meet Oct. 11

Roche Retirees will meet 1:30 p.m. Oct. 11 in building 76 auditorium. A video program, "How to Live Longer" narrated by Dr. Frank Field of CBS-TV will be shown.

Knights serving fish and chips

Bloomfield Knights of Columbus will serve fish and chips 6 to 8 p.m. Oct. 31 at 190 State St. Donation: \$5. For information or tickets, call Rose Ruffalo at 743-9688 or Lou Ciarla at 748-5785.

50's revival dance at St. Thomas

St. Thomas the Apostle Home & School Association will sponsor a 50's revival dance 8 p.m. to 1 a.m. Oct. 18 in Heron Hall, 50 Byrd Ave., Bloomfield. Tickets are \$12.50 in advance. Call Lorna Scardino at 338-1681 or Ginny Maulbeck at 338-9817 for tickets and reserved tables.

Indoor/outdoor flea market

VFW Post 493, 271 Washington Ave., Nutley, will hold an indoor/outdoor flea market 9 a.m. to 5 p.m. Oct. 5. For more information, call Barbara at 961-3671.

Food drive to aid hungry

Nutley Junior Woman's Club is sponsoring a food drive in celebration of World Food Day. Oct. 16. Bring canned or boxed food-items to the Nutley Public Library now through Oct. 16. Donations will go to a volunteer soup kitchen in United Methodist Church, Newark.

Columbus weekend flea market

The 4th annual Columbus Day weekend flea market and craft show will be open 10 a.m. to 5 p.m. Oct. 12 and 13 on the grounds of the Geriatric Center, corner of Belleville and Franklin avenues, Belleville. Over 100 dealers.

Masquerade ball dinner dance

Nutley Junior Woman's Club will sponsor a harvest masquerade ball dinner dance 7:30 p.m. to midnight Nov. 8 at the Elks Club, Chestnut St. Full dinner. Beer and soda available through the evening. Magic show, awards for best costume. The Pros disk jockey. For tickets at \$2.50 per person, call Pat Backman at 235-1485 or Mary Ellen Matarazzo at 667-6167.

Communion breakfast Oct. 5

The Sacred Heart Rosary Society, Bloomfield, will host its annual communion breakfast Oct. 5 at the Glen Ridge Country Club, Ridgewood Ave., Glen Ridge, immediately following the 10 a.m. Mass at the church. For tickets at \$10, call Margaret O'Boyle at 743-2276.

Communion breakfast Oct. 5

The Sacred Heart Rosary Society, Bloomfield, will host its annual communion breakfast Oct. 5 at the Glen Ridge Country Club, Ridgewood Ave., Glen Ridge, immediately following the 10 a.m. Mass at the church. For tickets at \$10, call Margaret O'Boyle at 743-2276.

Separated and Divorced Catholics

Ministry to Separated and Divorced Catholics will present attorney Mary Jean Gallagher in a discussion on the intricacies of divorce 8 p.m. Oct. 9 at St. Thomas the Apostle Church, 60 Byrd Ave., Bloomfield. For more information, call Lucille Palis Finamore at 744-8892 after 7 p.m.

(To appear in this column, releases must reach us by the Friday preceding publication. Coverage will be limited to events in the Belleville, Bloomfield and Nutley area primarily. Out of the area events will be covered only if space permits. Send releases to Events in the Area, 800 Bloomfield Ave., Nutley, N.J., 07110.)



Mr. and Mrs. Sati Mitra — nee Sandra Cronauer

Sandra Cronauer, Sati Mitra married

Sandra Susan Cronauer, daughter of Mr. and Mrs. Joseph Cronauer of Belleville, became the bride Aug. 23 of Sati P. Mitra, son of Mr. and Mrs. S. C. Mitter of Calcutta, India.

The double ring ceremony was performed by the Rev. June D. Hewitt in Wesley United Methodist Church, Belleville. A garden reception followed at the home of the bride's parents.

The bride's twin sister, Cynthia Gray of Ewing, was matron of honor. Dr. Jyoti Mazumdar of Urbana, Ill., was best man.

Mrs. Mitra, an alumna of Belleville High School and Cornell University, received a doctorate

in biological sciences from the State University of New York at Stony Brook, where she is employed as a postdoctoral research assistant.

Mr. Mitra attended St. Xavier's School in Calcutta and received his school certificate from Cambridge University. He is an alumnus of the University of Calcutta and earned his master of engineering and doctorate in nuclear engineering from Cornell University. He is currently employed by an engineering consulting firm on Long Island.

The couple will make their home in Stony Brook.

Shlissel family celebrates graduations, anniversary

Brian Scott Shlissel of New Brunswick, graduated from George Washington University, Washington, D.C., with a degree in finance. He was on the dean's list for two semesters.

His sister, Randi, graduated from East Brunswick High School and will attend the University of Miami, Fla. They are the children of Barry

and Joan Shlissel, formerly of Belleville and grandchildren of Belleville residents Ruth and Joe Shlissel.

Brian and Randi recently hosted a surprise 25th anniversary party for their parents at home. More than 50 relatives and friends attended. The couple second honeymooned in Israel and Rome.



Golden year — A surprise 50th anniversary dinner honored Andrew and Elsie Horvat Aug. 20 at the Fiesta, WoodRidge. Eighty-five friends and relatives attended the affair which was hosted by their children and their spouses: Joan and Richard Damurjian and Angela and Drew Horvat. The couple has lived in Belleville for over 40 years.

Stork Club

Mark A. D'Elia

A third child, a son, Mark Vincent, was born to Dr. and Mrs. Thomas G. D'Elia of Belleville Aug. 11 at Bayonne Hospital. He joins Thomas, nine and Daniel, two.

Mrs. D'Elia is the former Theresa Blackshaw, daughter of Walter Blackshaw of Barnegat and the late Mrs. Jessie Blackshaw. Dr. D'Elia is the son of Dr. and Mrs. Vincent G. D'Elia of Jersey City.

Peter L. Golub

A third child, a son, Peter Louis, was born to Mr. and Mrs. Peter Golub of Belleville Sept. 11 at St. Barnabas Medical Center, Livingston. Birth weight was 5 pounds, 11½ ounces. He joins Billy, 14 and Brigitte, seven.

Mrs. Golub is the former Donna Smith, daughter of Mr. and Mrs. George Smith of Pocono. Mrs. P. Golub is the son of Mr. and Mrs. Peter Golub of Belleville.

Jenna L. Constantino

A first child, Jenna Lee, was born to Mr. and Mrs. Frank Constantino of Belleville Sept. 18 at Clara Maass Medical Center, Belleville. Birth weight was 6 pounds, 8 ounces.

Mrs. Constantino is the former Laura DeLorenzo, daughter of Mr. and Mrs. Frank DeLorenzo of Belleville. Mr. Constantino, son of Mrs. Lorraine Constantino of Belleville, is a laborer with Department of Public Works, Belleville.

Wilfredo D. Gonzalez

A first child, a son, Wilfredo David, was born to Mr. and Mrs. Wilfredo Gonzalez of Newark Sept. 19 at Clara Maass Medical Center, Belleville. Birth weight was 7 pounds, 5 ounces.

Mrs. Gonzalez is the former Ana Cruz, daughter of Clara Cruz of Newark. Mr. Gonzalez, son of Ramonita Gonzalez of Newark, is a communications operator with Essex County Police Dept., Newark.

Gerard J. Iannuzzelli

A third child, a son, Gerard Joseph, was born to Mr. and Mrs. Jerry Iannuzzelli of Nutley Sept. 17 at Clara Maass Medical Center, Belleville. Birth weight was 4 pounds, 3 ounces. He joins Antonette, eight and Victoria, five.

Mrs. Iannuzzelli is the former Victoria Avalone, daughter of Mrs. Antonette Avalone of Nutley. Mr. Iannuzzelli, son of Mr. and Mrs. Joseph Iannuzzelli of Belleville, is a custodian with the Newark Board of Education.



Debra Worley — Anthony Malbo

Debra Worley engaged to wed Anthony Malbo

Mr. and Mrs. Wayne Worley of Belleville announce the engagement of their daughter, Debra Ann, to Anthony Michael Malbo III, son of Mr. and Mrs. Anthony Malbo of Ringoes.

The troth was made known Aug. 31 at Normandy Beach. A military wedding will be held at West Point in June of 1988.

Miss Worley, a graduate of Belleville High School, is an accounting major at Rutgers University.

Mr. Malbo, an alumnus of Hunterdon Central High School, is a 2nd class (junior) cadet at the United States Military Academy, West Point.

Depression in children is serious

By Paul Kennedy, M.D.

Most people think of childhood as being a worry-free, carefree, happy time of life. Until recently, it was believed that children could not suffer from depression in the same way as adults. Today we know that children can be depressed and if the illness is not recognized and treated, the consequences can be very serious indeed. Untreated depression can lead to suicide. Statistics reflect a tragic increase in suicides among children and adolescents. Also, a child's social and emotional development can be disrupted by depression.

Since depression in children is not that easy to recognize, the illness is often underdiagnosed and undertreated. Parents should be aware that the following behaviors may indicate depression in their child:

- Trouble in school. Inability to concentrate, a short attention span and a declining interest in school work and activities are characteristic. Some children who are clinically depressed are

mistakenly thought to have learning disabilities and some children who have learning disabilities become depressed when these disabilities are not diagnosed and treated.

- Eating problems, primarily not eating as much as usual, therefore not gaining weight as they are growing, are indicative of depression.

- Lack of energy. Young children normally want to play outdoors. A depressed child will complain of feeling tired and will not be interested in play.

- Irritability, temper tantrums, aggression, fighting at home and in school, restless sleep, complaints of headaches and stomachaches and feelings of wanting to cry are significant symptoms. So are persistent thoughts of death or suicide as well as self-destructive behavior and frequent "accidents."

- Inability to have fun. The loss of enjoyment and pleasure in hobbies, sports and school activities — anything that the child once considered fun — is a sign of depression.



In the nation's capitol — Mary Ann Flor of the Junior Woman's Club of Belleville, currently serving as the State Public Affairs and FREE Enterprise chairperson of the New Jersey State Federation of Women's Clubs, attended a conference recently in Washington, D.C. Sponsored by the 500,000 member FREE Enterprise Program, it was highlighted by a day on Capitol Hill at the Senate hearings, lunch in the Watergate Caucus Room and meeting with Sen. Bradley's legislative staff. The program is dedicated to encouraging better understanding of the importance of the free enterprise system to the American way of life. From left, top: Jacqueline Weising, Mary Ann Flor and Roberta Dyrsten, the N.J. delegation; bottom row: Gerald S. Gendell of Procter and Gamble, Lois Perkins and Phyllis Roberts of the General Federation of Women's Clubs and Bob Fitzpatrick of Procter and Gamble.

Rope Limousine Service Inc.

Featuring Our All New
Platinum Mist Super-Stretch
To Make Your Wedding Day Extra Special,
Accept a Bottle of Complimentary Champagne!



• Sony Color TV • Individual Climate Control
• Electric Bar • AM/FM Stereo Cassette
• VCR • Privacy Shade • Sun Roof
• Telephone • Special Arrangements

OUR ADDITIONAL SERVICES —
Atlantic City Trips — Proms
NYC Theater & Dining — Corporate Accounts

560 Broadway, Clifton/Passaic Borderline 472-9173

ORTHODONTICS

AFFORDABLE BRACES
FOR CHILDREN & ADULTS

CONVENIENT HOURS
(EVENINGS TOO!)

DENTAL
INSURANCE
WELCOME

SECOND OPINIONS PROVIDED

NEVER A CHARGE FOR CONSULTATIONS
DR. MICHAEL B. FITZPATRICK
DR. BRUCE FOX

484 Washington Ave. Belleville
759-2173

BELLEVILLE - KEARNY
OBSTETRICS - GYNCOLOGY

HOWARD GRODER, M.D.
JEFFREY ROSEN, M.D.

HIGH RISK PREGNANCY
INFERTILITY

Clara Maass
Professional Building
5 Franklin Avenue
Belleville, N.J. 07109
759-0700

Arlington
Medical Building
837 Kearny Ave.
Kearny, N.J. 07032
991-1519

"Serving The Community For 40 Years"

Enjoy Making Your Own Holiday Gifts

Cindy's Ceramic Studio

Hours: Mon, Tues, Wed, - 7 p.m.-9:30 p.m.
Thurs. - 10 a.m.-1 p.m.
Sat. - (no classes) 10 a.m.-1 p.m.

Pleasant and Friendly Atmosphere

FIRST CLASS FREE

classes, greenware, gifts & party favors

759-9208 390 Washington Ave. Belleville 751-4292

Elaine's Hair Designs

148 Little St.
Belleville, N.J.
759-9039

Perming Unset
Haircutting electrolysis

Unsure about the everyday regular prices at your market?

Only Grand Union proves their low prices with The Price Finder.

Look for our colorful flyer in your newspaper, in your mail or pickup your FREE copy Grand Union this week (while supply lasts).



Red Dot Special — always less than everyday prices.

U.S.D.A. Choice - Boneless Beef
Rib Eye Steak
3.99
lb.

Spag. #8, Thin Spag. #9 or Ziti #28
San Giorgio Pasta
2.100
1-Lb. Pkgs.

Super GRAND UNION Coupon
(720) Regular or Diet
Seven-Up Soda
One 2-Liter Btl. **69¢**
No Minimum Purchase Required With This Coupon. Good Sept. 28 thru Oct. 4. Limit One Coupon Per Customer.

Plume de Veau - Fresh
Shoulder Veal Chops
1.97
Blade Bone lb.

Assorted Varieties
Duncan Hines Cake Mixes
79¢
18.5-oz. Pkg.

Super GRAND UNION Coupon
(719) Chilled - Select 100% Pure Florida
Citrus Hill Orange Juice
One Half Gal. Cont. **99¢**
No Minimum Purchase Required With This Coupon. Good Sept. 28 thru Oct. 4. Limit One Coupon Per Customer.

Prepriced at \$1.99 - All Temperature
Cheer Detergent
1.69
42-oz. Pkg.

Golden Ripe
Chiquita Bananas
3.99
lbs.

Super GRAND UNION Coupon
(721) Assorted Flavors
Ice Cream Dolly Madison
One Half Gal. Cont. **1.69**
No Minimum Purchase Required With This Coupon. Good Sept. 28 thru Oct. 4. Limit One Coupon Per Customer.

THE BUTCHER BLOCK	PRODUCE	GROCERIES
U.S.D.A. Choice Beef - Thin Cut Boneless Fresh Brisket 1.99 lb.	Large Bunch Fresh Tender Green Broccoli 99¢ Bunch	Brick Pack - ABC or Regular Folgers Coffee 2.89 1-lb. Bag
U.S.D.A. Grade 'A' Fresh Holly Farms Chicken Breasts 1.69 Split with Ribs lb.		Natural or Clear Red-Cheek Apple Juice 1.39 Half Gal. Btl.

Fresh Brisket 1.79 U.S.D.A. Choice - Boneless Beef Thick Cut lb.	Drumsticks Turkey 69¢ Shady Brook - U.S.D.A. Grade 'A' Fresh lb.	White Potatoes 1.69 Eastern - All Purpose 10-lb. Bag	Cup O' Noodles 2.100 Beef, Shrimp, Chicken or Crab 2-lb. Pkg.	Cascade Detergent 2.99 For Automatic Dishwashers - Select a Regular 5-lb. Pkg.
Brisket for Stew 1.99 U.S.D.A. Choice - Boneless Beef lb.	Colonial Ham 1.89 Semi-Boneless lb.	Sweet Red Grapes 79¢ Christmas Red lb.	Pfeiffer Dressing 69¢ Regular or Reduced Calorie 8-oz. Btl.	Ivory Soap 79¢ Personal Size 100% Pure 2-lb. Box
Veal Roast 2.69 Plume de Veau - Fresh Boneless Neck lb.	Smoked Butt 2.19 Colonial - Boneless Pork Shoulder Water Added lb.	Romaine Lettuce 59¢ Fresh Crisp lb.	Tomato Juice 79¢ Saprimato 46-oz. Cont.	Downy Fabric Softener 2.89 Liquid 96-oz. Cont.
Veal for Stew 2.49 Plume de Veau - Fresh Boneless lb.	Chick'n Roasters 1.99 Perdue Done-It - Cooked lb.	Concord Grapes 2.49 Locally Grown 2-Qt. Basket	Noodles Penn Dutch 69¢ Egg - Homestyle, Fine, Medium or Broad 1-lb. Pkg.	Scott Napkins 1.99 White or Colored Pkg. of 450
Veal Breast 99¢ Plume de Veau - For Stuffing lb.	WHOLESALE SAVINGS	Carrots w/Tops 79¢ Fresh Tender Bunch	Wesson Oil 3.99 Pure Vegetable 1-Gal. Cont.	Kal Kan Ice Cream 69¢ Assorted Varieties 21-oz. Pkg.
Drumsticks Chicken 1.19 Holly Farms - U.S.D.A. Grade 'A' Fresh lb.	Whole Rib Eye 3.79 U.S.D.A. Choice - Boneless Beef or Half Untrimmed lb.	Kiwifruit 2.89 Imported from New Zealand 2-lb. Pkg.	Tomato Sauce 6.100 Hunt's - Regular or No Salt Added 8-oz. Cans	Potato Chips 1.19 Doritos 6.5-oz. Pkg.

THE CORNER DELI	THE BIG FREEZER	DATE-LINE DAIRY	HOME & FAMILY
Turkey Breast 1.19 Norwestern - Gourmet Quality Qtr. lb.	Orange Juice 99¢ Regular, Country Style or Reduced Acid 110-oz. Can	Yogurt Colombo 2.100 Assorted Flavors 8-oz. Cans	Crest Toothpaste 1.19 Regular, Tartar, Mint or Gel 4.2-oz. Tube
Baked Ham 1.99 In-Store Prepared - Frenched or Glazed Half lb.	Hash Browns 2.99 On-the-Go - Microwave or Toaster Tots 4-oz. Pkgs.	Sour Cream 99¢ Breakstone's 1-lb. Cont.	Scope Mouthwash 2.49 Refreshing 24-oz. Btl.
American Cheese 1.49 Land O Lakes - Yellow or White Half lb.	Pillsbury Pancakes 1.49 Microwave 15.2-oz. Pkg.	Grapefruit Juice 1.59 Minute Maid - Chilled Half Gal. Cont.	Head & Shoulders 3.29 Shampoo Concentrate 16-oz. Tube
Liverwurst 1.39 Tobin's First Price 9-Slice 1/2-Gal. Pkg.	Ellio's Pizza 2.59 9-Slice Cheese 24-oz. Pkg.	Cheddar Cheese 1.69 Land O Lakes 4-Qt. Cheddar Sharp or Extra Sharp 8-oz. Pkg.	Sure Solid 2.29 Deodorant 2-oz. Cont.

EMPLOYMENT OPPORTUNITIES	GRAND UNION Coupon	GRAND UNION Coupon	GRAND UNION Coupon
<ul style="list-style-type: none">Part Time OpeningsFlexible HoursFull Time OpeningsAttractive SalariesExcellent BenefitsApply Today At Your Nearby Grand Union	20¢ Off With This Coupon And Purchase Of One 1-Qt. Btl. - Reconstituted Borden's Realmon Juice Coupon Good Sept. 28 thru Oct. 4. Limit One Coupon Per Customer.	25¢ Off With This Coupon And Purchase Of One 2-lb. Cont. - Drink Mix Nestle's Chocolate Quik Coupon Good Sept. 28 thru Oct. 4. Limit One Coupon Per Customer.	15¢ Off With This Coupon And Purchase Of One 5-lb. Bag - All Purpose Bread or Unbleached Pillsbury Flour Coupon Good Sept. 28 thru Oct. 4. Limit One Coupon Per Customer.

354 Main Street, Belleville;
505 Allwood Rd., Clifton;
710 Bloomfield Ave., Glen Ridge

OPEN 24 HOURS
CHECK YOUR LOCAL GRAND UNION AND KNOW WHEN FOR EXACT STORE HOURS

Only The Best Always For Less

GRAND UNION

Not Responsible For Typographical Errors. We Reserve The Right To Limit Quantities. For Store Information, Call Toll Free, 1-800-221-1835.
Prices and Offers Effective Sunday, Sept. 28 thru Saturday, Oct. 4, 1986.

Belleville Times SPORTS

Buc Shots



Last week, we remembered Bill "Doc" Ellis for his work with the Belleville football team and the special meaning this man had with the youth of Belleville.

As you know, Doc passed away on September 15, and his passing left a numbness on those who knew him well. One of those people, Wayne Worley, grew up with Doc and knew him better than just about anyone in town. Last weekend, Wayne Worley took a few minutes to remember his friend, Doc Ellis.

"What can I say, I've known him for a long time. He was my best friend, my best man at our wedding (Wayne and Grace Worley have been married for nearly 25 years). He was like a brother to me. We went to grammar school together, then went through Belleville High School together."

Wayne and Doc graduated in the class of 1967. Even after graduation, the two men never lost touch. Doc attended St. John's University for two years, majoring in pharmacy, but had to stop classes when he ran out of money.

"The people of Belleville gave him a testimonial while he was in college," recalled Worley. "We tried to raise money for him to continue school."

Doc received about \$1,000.00 from the testimonial, which Worley said, was a lot of money in the late 50's.

"He went back to school," Worley said, "but when he got back, they had changed the program and he couldn't afford the extra year the program was going to take."

Doc was always medically inclined. He worked in a drug store as a kid and continued to do so long after high school graduation.

"He was very bright," Worley said. "He knew his medicine."

Doc spent six months in the Army Reserves and became a civilian supply sergeant. He held that job for over 20 years.

"He gave it up about three years ago," Worley recalled. "He didn't want to commute. They had moved his assignment three years ago and he didn't want to commute."

Doc was a bartender at the Bakers Brew in Belleville, where he worked on a full time basis. It was there that Doc had a dream, that unfortunately, never came to pass.

It seems that Doc wanted to open his own bar and restaurant in Belleville, where he would have Belleville football nostalgia as the theme of the establishment.

"He wanted to do it for the past football players at Belleville High," Worley said. "He wanted to have a place for those players to come over and talk about the old days. It was a dream of his."

According to Worley, Doc Ellis never talked much about his feeling toward Belleville football.

"You know he wanted to be there, but he never said much. He didn't want much in return, he was just happy to be a part of it all. He was happy to see the kids and be a part of the team. What was really special to him was training players and later, training those players' sons."

Doc Ellis first became involved with Belleville football when he was in the eighth grade.

"Doc was the water boy," Worley said. "He would bring the water out on the field, but he could hardly carry the bucket because he was so small. His older brother, Fred, worked with the team and that's how Doc got involved."

From the eighth grade through last season and the early pre-season years this year, Doc Ellis served the Belleville football program 35 years overall. Talk about experience and knowledge of Belleville football, you won't find a man who knew it any better than Doc.

"He would buy candy and gum for the players to settle their nerves before a game," recalled Worley. "That's the kind of guy he was. He was always thinking of others."

He was truly a nice guy. That's about the best way to remember Bill Ellis. He did so much for the youth of Belleville and represented a very important role on the Belleville football teams throughout the years. To say that he will be missed would be a true understatement. The man was a legend.

While we're on the note, I would like to thank Wayne Worley for sharing a few stories about Doc with me. I realize that it wasn't easy to talk about, but I appreciate Wayne's time in reminiscing about his best friend.

Athlete of the Week

Let's go with Joe Delle Monache for the first pick of the '86-87 school year. Joe intercepted two passes in the Paramus game and was in on a number of tackles.

Baseball

The major league playoffs are rapidly approaching with all four teams having clinched its respective divisions. The Mets and Astros will battle in the N.L. and the Angels and Red Sox will duke it out in the A.L. The Angels might be a team of destiny in '86. Many of those players will not be back next season, and they are looking for one more call to glory. They also have some good pitching and could beat the Red Sox, like the Royals did last year when they upset the Blue Jays for the A.L. crown. The Mets and Astros will be in a tight race for the division. Pitching is dominant for both teams and the home field advantage, which belongs to Houston, could be a big plus. If the Mets can split the first two games in Houston, they could be in good shape, however.

Last Weeks Quiz

Clerison won the 1981 NCAA championship, beating Nebraska, 22-15 in the Orange bowl to clinch the crown. The Tigers went undefeated in '81.

For This Week

Belleville defeated Montclair in football, 7-6 in 1980. Who scored the Buccaneer touchdown in that game and who made the key interception late in the game to preserve the victory.

Lose tough game 9-6

Football Bucs drop opener against Paramus H.S....

Despite an improved offense and a good defense, the Belleville football team dropped its opening game of the 1986 season to Paramus, 9-6 last Saturday afternoon on the road.

The Bucs will have little time to dwell on the loss. The team will play tonight, at home, against powerful Ridgewood High School, at 7:30 p.m. There should be a large crowd at Municipal Stadium for the home opener in this rare Thursday night contest. The schedule shows no signs of letup the following week, when Belleville plays host to Montclair on Friday, October 10, at 7:30 p.m.

They (Paramus) have a good ball club," said head coach John Senesky. "The entire league is tough this season. Eastside battles Bergen Catholic down to the wire (B.C. won, 27-23). Passaic was strong (beating Hackensack) and so was Montclair (who defeated Don Bosco, 34-12). We had our chances in that game, however. We had too many penalties and too many mistakes that hurt our chances."

Paramus started the scoring with a 45-yard field goal in the first quarter. Before the half ended, the home team struck for its only touchdown on a 52-yard strike for a 9-0 lead at intermission.

Their touchdown came on a

busted coverage play," Senesky explained. "We beat ourselves, we should have won."

The Belleville tally came in the fourth quarter, on a five yard pass from junior quarterback Jeff Spilsbury to senior Jim Murphy. It was the first Belleville touchdown since the fourth quarter of the fourth game of the 1985 season (a 24-6 Belleville win over Bloomfield). The touchdown culminated an impressive 75 yard drive which featured an good 30 yard run from Jay Marchese that kept the drive moving.

The touchdown was on a roll-out pass," Senesky said. "He can either keep the ball and run, or pass it. Either way, he would have got in. Our offensive line is being rebuilt and they're learning new blocking formations, but the kids improved as the game went on."

The long drive was also reminiscent of previous Belleville drives in the past. The Buccaneer trademark has been long scoring drives, using a lot of the clock and grinding out a good running game behind a strong offensive line. Belleville could not generate that type of offense last year, so it was good to see the Bucs moving the ball with consistency in the Paramus game.

We moved the ball," Senesky said. "But those clipping

penalties, offside penalties and three lost fumbles did us in. We made some mistakes in our kicking game, too. The punting (by Jamie Galotti) was good, but our coverage wasn't and we gave up yards on the returns."

Spilsbury played a nice game, establishing a Buccaneer passing game with close to 200 yards passing.

"That's the trend in the NN-JIL this season," Senesky said. "There are a lot of good passers in the league. If you want to move the ball, you have to be able to pass it from time to time."

The Bucs received a good defensive performance from Joe Delle Monache, who intercepted two passes, John Magi and Murphy. As a matter of fact, those three men accounted for a good deal of the Buccaneer tackles.

Also, on a positive note, there were no injuries to report on the Bucs roster, so the team should be in good shape for the tough game that is expected with Ridgewood.

"They have an excellent football team," Senesky said of the Bergen County school. "They have built a very good program and this year, have an outstanding passer and very good receivers. They have good size and speed. It will be a tough

game for us."

Ridgewood is led by senior quarterback Paul Tornatore, a 6'2" passer who does not hesitate in testing the air space. Last season, he threw 18 touchdown passes and accounted for 1,480 aerial yards. His favorite receiver is senior Steve Smith, who caught 27 passes from his split end position a year ago.

NOTES: Ridgewood defeated Bloomfield, 37-0 in its opener last week. Belleville and Ridgewood have met once before, in the 1983 season at Belleville High. That game went down to the wire before Ridgewood posted a 20-14 upset of the favored Buccaneers.

Ridgewood has been a playoff entry in Group IV, Section I over the past two seasons. If you're superstitious, then you might like to know that the last time Belleville beat Montclair was in a night game, on a Friday, at Belleville High. It was also in a steady downpour, with the Bucs winning, 7-6 in 1980. The last four games between the two have been played during the day, with Montclair winning by scores of 22-2, 14-6, 28-0 and 20-0. This year's game with the Mounties, of course, is on a Friday night. The only thing you can't guaranty is the rain.

...But Soccer Bucs post 1st victory against Bloomfield

By Chris Lawlor

It was a week of firsts for the Belleville High School soccer team last week. The Bucs (1-1-2) picked up their first win, first goal and

first multiple goal game of the young season.

The win came against Bloomfield 1-0 on Sept. 24, the goal came off the foot of Walter Capozucca,



Going for it — Belleville and Bloomfield players try to outmaneuver each other for possession of the black and white. (Photo by Chris Lawlor)

and the team scored a pair of goals in a 2-2 tie with Eastside on Sept. 26.

"The Bloomfield game was a nice effort for us," said head coach Tony DeAquino. "We didn't sit back on the ball in the second half because we lose our competitive edge, we got to continue to attack."

The Bucs wrapped the game early as Capozucca took a pass from winger Alex Araya and put the ball past Bengal goalkeeper Brian Synnott for the game winner under the lights at Foley Field. Bucs netminder Chris Goldrick recorded his second shutout in four games. In the process he made nine saves, as did Synnott.

With only two days rest, the team hosted Eastside. The Ghosts boast the 'one-two' scoring punch of striker Roberto Maldonado and winger Dexter Lalley. It was Maldonado who accounted for his team's offense by talking goals in the first and third quarters to give Eastside a 2-1 advantage going in to the final stanza.

Belleville took an early 1-0 lead as Roger Real scored his first goal of the year on an assist from Oscar Valiera and then Maldonado beat Goldrick to knot the score at 1-1.

"He's a quick and sticky player," said DeAquino of Eastside's all-state performer. "He can score from anywhere and is tough to move off the ball."

In the fourth-quarter Araya took a pass from Capozucca and beat goalie Cecil Pella for the equalizer.

"We should have won the game, we had our opportunities late in the game," said DeAquino. "I think that our endurance wore them down."

On the other hand, the coaching talents of Eastside coach Joe Reich may have helped the Ghosts attain that tie. DeAquino had nothing but praise for his counterpart.

"He's (Reich) a great coach. You've got to be thinking every second of the game or he'll do something to beat you."

A tough week will now see the Bucs take on Montclair (Sept. 30), Passaic and the much improved Nutley. The game on Oct. 4 with Seton Hall Prep has been tentatively rescheduled for Oct. 27 but that date is still pending.

"I'd like to be in the game," said DeAquino of chances against the Mounties. "They've always had a tough program and a lot of depth. "Nutley looks a lot better and they have a few fullbacks who can run with the ball. I hope to have solid games from the midfielders," he said.

If the Bucs booters are to be successful than DeAquino admits that his midfield play and overall endurance of the team will have to prevail.

"The key to our midfielders, they have to go both ways. With our endurance we'll be running and producing as the games go along."

SIDE KICKS: Keith Woods who netted 11 goals last season has been shut out this season, but DeAquino feels that his endurance level is up from last year, one of his weaknesses. Goldrick is only allowing 1 goal per contest. — The Bucs will be home today against the Indians at 4 p.m., Clearman Field and at Nutley on Oct. 7, Owens Field, 7:30 p.m.

Tennis Buccanettes shut out by Ridgewood, 5-0

It wasn't a week to remember for the Belleville tennis team. The girls were shutout by Ridgewood, 5-0 and lost two matches in as many tries in the Essex County tournament. The team regular season mark fell to 1-4 with the loss to Ridgewood.

The girls had a busy week of action scheduled this week. Last Tuesday, the team was in Passaic. Yesterday, it battled Nutley and this afternoon, will be in Teaneck for a 4 p.m. start. Next Monday, the girls are host

to Kennedy and next Wednesday, will battle Clifton on the road. Both matches commence at 4 p.m.

"We're just not hitting the ball consistently," said head coach Karen Fucello. "We're not hitting it for a steady period of time. Also, we're not consistent in our play. One game, we do pretty well and the next, we make silly mistakes. We have to cut down on the unforced errors. It's not like our opponents are tearing us apart. We're hurting

ourselves."

Fucello had praise for the play of her singles players, Janet Reiman, Darleen Juliano and Renee Julian.

"They are improving," the coach said of the threesome. "I know they can play better and with more consistency. If they continue working on the basics, the consistency will come."

Fucello also noted that the Essex County tournament, normally a difficult assignment, was even more rugged than nor-

mal this year.

"It was a real tough tournament this year. It was good experience for our younger players, though. It's good for the players to compete in a tournament like this. I just hope they learn from it and can improve by watching the best."

The team lost to Montclair Kimberly Academy, 5-0, then were beaten by the same score against Montclair in the consolation game.

Co-Sponsored by BELLEVILLE LIONS CLUB, Dennis Mautone, Esq. President

BHS Cross Country

Oct. 2	Montclair	H	4 p.m.
Oct. 7	Passaic	A	4 p.m.
Oct. 14	Nutley	H	4 p.m.
Oct. 16	Paterson Kennedy	A	4 p.m.
Oct. 21	NNJL Meet	A	

BHS Football

Oct. 2	Ridgewood	H	7:30 p.m.
Oct. 10	Montclair	H	7:30 p.m.
Oct. 18	Paterson Eastside	A	1:30 p.m.
Oct. 24	Bloomfield	H	7:30 p.m.
Nov. 1	Passaic	H	2 p.m.
Nov. 8	Clifton	A	1:30 p.m.
Nov. 15	Paterson Kennedy	A	1:30 p.m.
Nov. 27	Nutley	H	11 a.m.

BHS Gymnastics

Oct. 2	Brearley	A	4 p.m.
Oct. 7	Teaneck	A	4 p.m.
Oct. 10	Bloomfield	H	6:30 p.m.
Oct. 14	Hasbrouck Hts.	H	6:30 p.m.
Oct. 17	Montclair	H	6:30 p.m.
Oct. 21	Clifton	H	4 p.m.
Oct. 23	Neuman Prep	A	4 p.m.
Oct. 28	Verona	H	4 p.m.
Oct. 31	League Meet		
Nov. 6	Kearny	H	4 p.m.

FALL SCHEDULES

BHS Volleyball

Oct. 1	Montclair	A	4 p.m.
Oct. 2	Passaic	H	4 p.m.
Oct. 3	Passaic Valley	A	4 p.m.
Oct. 6	Nutley	A	4 p.m.
Oct. 7	Good Council	A	4 p.m.
Oct. 8	Teaneck	A	4 p.m.
Oct. 10	Paterson Kennedy	H	4 p.m.
Oct. 14	Clifton	A	4 p.m.
Oct. 15	Bloomfield	H	4 p.m.
Oct. 20	Paterson Eastside	H	4 p.m.
Oct. 21	Immac. Heart	A	4 p.m.
Oct. 22	Montclair	H	4 p.m.
Oct. 23	Neuman Prep	H	4 p.m.
Oct. 24	Passaic	A	4 p.m.
Oct. 27	Paramus Catholic	H	4 p.m.
Oct. 28	Benedictine	A	4 p.m.
Oct. 29	Nutley	H	4 p.m.
Oct. 30	Neumann Prep	H	4 p.m.
Oct. 31	Paterson Kennedy	A	4 p.m.
Nov. 3	Hackensack	H	4 p.m.
Nov. 4	Good Council	H	4 p.m.

BHS Soccer Schedule

Oct. 1	Nutley	A	4 p.m.
Oct. 2	Teaneck	A	4 p.m.
Oct. 6	Paterson Kennedy	H	4 p.m.
Oct. 8	Clifton	A	4 p.m.
Oct. 10	Bloomfield	H	4 p.m.
Oct. 15	Paterson Eastside	A	4 p.m.
Oct. 17	Montclair	H	4 p.m.
Oct. 20	Passaic	A	4 p.m.
Oct. 22	Paramus Catholic	H	4 p.m.
Oct. 24	Nutley	H	4 p.m.
Oct. 27	Paterson Kennedy	A	4 p.m.
Oct. 29	Hackensack	H	4 p.m.

BHS Girls Tennis

Oct. 2	Passaic	H	4 p.m.
Oct. 4	Seton Hall	H	11 a.m.
Oct. 7	Nutley	A	4 p.m.
Oct. 9	Paterson Kennedy	H	4 p.m.
Oct. 14	Ridgewood	H	4 p.m.
Oct. 16	Clifton	A	4 p.m.
Oct. 21	Bloomfield	H	4 p.m.
Oct. 23	Paterson Eastside	A	4 p.m.
Oct. 28	Montclair	H	4 p.m.
Oct. 30	Passaic	A	4 p.m.
Nov. 3	Nutley	H	4 p.m.
Nov. 5	Paterson Kennedy	A	4 p.m.
Nov. 8	St. Peter's	H	11 a.m.

Junior varsity schedule is the same.



Martine receives BS from Embry Riddle U.

Thomas Joseph Martine, son of Mr. and Mrs. Paul Martine of Belleville, received his BS during the graduation ceremonies at Peabody Auditorium. Embry Riddle Aeronautical University, founded in 1926, is the only totally aviation-oriented University in the world, conferring academic degrees through the Masters level in 26 aviation disciplines. ERAU is recognized within the aviation industry as a leader in higher-aviation education. Thomas Martine graduated from Belleville High School in 1982. He has been hired as a flight engineer for People Express.

IMPORTANT NOTICE PLEASE READ CAREFULLY

HOMEOWNERS CUT HIGH FUEL BILLS!!

GAS OR OIL HEAT SYSTEMS

PRE SEASON SPECIAL

FUNDING AVAILABLE WITH EASY CREDIT APPROVAL

ENERGY ASSISTANCE PROGRAMS

- SAVE UP TO 20% YEAR ON FUEL WITH A LITCO BURNER
- AMERICAN MADE QUALITY
- LAST BURN, LONGEST FUEL
- 20 YEAR MANUFACTURER WARRANTY
- STATE APPROVED LICENSE ASSISTANCE
- SERVICE IN 24 HOURS
- REMOVE PRESENT BURNER FROM PRESENT
- INSTALLATION ACCORDING TO CITY CODE
- UTILITY APPROVED
- OVER 25 YEARS EXPERIENCE

ENERGY RESOURCES CENTER

CALL FOR FREE ESTIMATE

429-0555

160 ORANGE ST., BLOOMFIELD

MARI

Whoever you are, we're your bank for life.

That's our commitment to the people of New Jersey — a bank that gives you the innovative services you need when you need them with a real understanding of your personal banking needs. We want to be your bank today and tomorrow. We want to be your bank for life. Here are just a few reasons why.

Save thousands with a bi-weekly mortgage.

- A lot of banks offer mortgages but the Howard has a variety of plans including our innovative bi-weekly mortgage that can save you tens of thousands of dollars in interest charges.

A CD that renews itself.

- We have a complete range of high interest savings plans from Money Market Investment Accounts to high interest CDs that renew themselves automatically.

#1 in student loans.

- We offer loans of all kinds, including convenient student loans. As a matter of fact, we make more student loans than any bank in New Jersey.

Home-equity loans — no up-front fee.

- Our home-equity backed HERO® line of credit lets you borrow money just by writing a check. You pay no fees to open a HERO and interest is charged only on the amount you use. Compare that with other banks.

Customer Service Center.

- And we promise you the kind of personal, understanding and professional service you expect from your bank. We even have a Customer Service Center just a phone call away that you can use to get current investment, mortgage and loan rates, check your Howard account balances, renew accounts, stop payments or just learn the address of the Howard office nearest you. Just call 1-800-4-HOWARD® and put us to the test.

We're the Howard — your bank for life. For the life you live now and the life you have planned for the future. Come to the Howard office nearest you at your convenience and we'll prove it once and for all.

the Howard
Your bank for life™

Customer Service Center Hours:
8am-6pm, Mon-Fri, 9am-1pm, Sat.
Serving you locally at 375 Franklin Avenue, Nutley and
726 Washington Avenue, Belleville.

OPEN HOUSES SUN. OCT. 5, 12:00-3:00

Montclair Vicinity

89 Mawal Drive, Cedar Grove
Enjoy home ownership in our darling Colonial in desirable Cedar Grove. Three bedrooms, 1½ baths, screened porch and deck round out the picture for the perfect family home. Asking \$179,500.

42 Melrose Place, Montclair
There's room for the whole family in this sunny six bedroom Colonial on a charming Montclair street. Beautifully landscaped, fenced in yard to enjoy from new custom deck. Living room with fireplace, formal dining room, large modern eat-in kitchen, and something extra — a ground floor suite with separate entrance suitable for housekeeper, home office, or the teenagers. \$359,000.

169 Upper Mountain Ave. Montclair
Historical home offers old world charm with new world comfort. Three beautiful fireplaces, mahogany paneled den, extra large living room and dining room. There is a den or maids room with complete bath and two powder rooms. A modern kitchen with morning room overlooking exquisitely landscaped, terraced grounds with 20 x 40 heated pool, decks and cabana. Located upstairs are 4 bedrooms, each with sitting room and bath. Central air conditioning is a bonus. \$875,000.

SCHULTZ REAL ESTATE
50 Church St.
Montclair, N.J. 07042
783-5058

Member of the National Association of Realtors®
Equal Opportunity Lender
Serving you locally at 375 Franklin Avenue, Nutley and
726 Washington Avenue, Belleville.

Religious Viewpoints

Acres of diamonds

Russell Conwell was the successful pastor of the Baptist Temple in Philadelphia, Pa. One day, a group of young men asked him if he would be willing to instruct them in college courses they wanted education, but lacked the money to pay for. Conwell was so intrigued with the idea of founding a college for poor but deserving young men, he became the founder and first president of Temple University, 1888, 1935.

Dr. Conwell earned seven million dollars to start this school. He did so by giving more than 6,000 lectures throughout the country. In each of them he told a true story called "Acres of Diamonds."

The story was the account of an African farmer who heard tales of settlers making millions by discovering diamond mines. These tales so excited the farmer that he sold his farm and spent the rest of his life wandering over the vast African continent searching for successfully for diamonds. Finally, in a fit of despondency, broke and desperate, he threw himself into a river and drowned.

Meanwhile, the man who bought the farm found a large and unusual stone in a stream, which cut through the property. The

stone turned out to be a great diamond with enormous value. He soon discovered another diamond on the farm property. It became one of the world's richest diamond mines.

The first farmer had owned acres of diamonds, but had sold them for practically nothing in order to look for them elsewhere. If he had only taken the time to explore and analyze his own property, he would have found what he sought.

The thing about this story that so profoundly affected Dr. Conwell and those who attended his lectures was the idea that each of us is standing in the middle of an acre of diamonds.

And they shall be mine, saith the Lord of hosts, in that day when I make up my jewels.

"Malachi 3: Are you one of God's jewels or diamonds? If you are not sure, make sure today by inviting the Lord Jesus Christ to come into your life and wash away your sins. We can be your Saviour. Are you like the African farmer looking elsewhere for eternal treasure? Look, or behold the Lamb of God (Christ) who is willing to take away your sin and make you one of His jewels. St. John 1:29."

Bible: God's miracle book

The Bible is unique in that it does not include a haphazard collection of writings that is an incoherent whole. Anyone who reads the Bible carefully will quickly realize that there is a unity about it that is nothing less than marvelous. It is inspired, authoritative, and entirely trustworthy. What are the grounds for believing this? Consider the following:



The Wonder of its Formation

The 66 books of the Bible were written by about 40 different writers who came from different backgrounds. The writers were a king, a doctor, a herdsman, a tax gatherer, a scribe, a fisherman, etc. Their writing spread over a period of 1,600 years, so there could be no collusion among them. Yet, when these 66 books were placed together, there is a perfect unity and harmony about them. What is the explanation? Only one: The Bible is God's miracle book.

The Accuracy of its Statements

It is commonly held that the Bible is full of errors. However, what seem to be discrepancies are cleared away after careful investigation. There is not one single proof of inaccuracy in the whole Bible. It is accurate historically, geographically, scientifically, psychologically, and verbally. What is the secret of its accuracy? The Bible is God's miracle book.

The Fulfillment of its Prophecies

Prophecy is history written in advance. The Bible, over 30 Old Testament prophecies relating to Jesus, and the trial and crucifixion which were all fulfilled within 24 hours after He died. What is the explanation of this prophetic accuracy? It is this: The Bible is God's miracle book.

The Insistence of its Message

There is one message which runs right through the Bible. It is the message of God's great love for sinful humanity, of the gift of His Son, of His gracious provision of salvation. This great message is stated as early as Genesis 3:15 and can be traced through the Bible until it is that appeal to sinful man to accept the Gospel invitation (Rev. 22:17). How can this consistent message be accounted for? The explanation is this: The Bible is God's miracle book.

Philip Molinari, 85 was platinum refiner

Philip Molinari, 85, died September 13 at Freehold Hospital in Freehold.

Born in Newark, Molinari resided in Howell, N.J. for the past five years.

Molinari was a platinum refiner for Engelhardt Industries of Carteret.

He is survived by his wife Rose Speta, four daughters, Mildred Napoli and Mary Mucchello, both of Belleville, Diane Malgieri of Howell, and Carole Marco of Montville.

A funeral service was held for Mr. Molinari at the Bondi Funeral Home in Nutley.

Kathryn Van Demark

Kathryn Van Demark, 83, of West Caldwell died September 22 in her home. She was a home maker.

Born in Newark, Mrs. Van Demark lived in Belleville for several years before moving to West Caldwell 24 years ago.

A memorial service was held for Mrs. Van Demark at Christ Episcopal Church in Belleville on September 24.

She is survived by her husband, Herbert, a son, Herbert A., a sister, three grandchildren and three great grandchildren.

Obituaries

Alfred Russo, 78; in construction

Alfred Russo, 78, of Irvington died August 27 in his home.

Born in Newark, Russo resided in Irvington for the past 30 years. He was a construction worker employed with LaFare Construction Company of Newark.

Russo is survived by his son, Paul of Belleville and by another son, Jack Russo of Nutley. He is further survived by his sister, Vera Sierchio of Belleville.

A funeral service was held at the Bondi Funeral Home in Nutley.

Belleville Varsity Club

mourns the death of

WILLIAM "DOC" ELLIS

who passed away on September 15, 1986

A Past President and Friend to all
Belleville Athletes

TIME IS RUNNING OUT!

Last days for special incentives!

Over 80 1986 Cars & Trucks to Choose From!

Buy now for best choice of options & colors.

NOVAS!

4-Door Sedan w/Std. Power Brakes, 1.6L 4-cyl. Engine & opt. Pwr. Steering, Auto Trans., Air-Cond., Sport Mirrors, Halogens, AM/FM Stereo, etc. Stock No. 6422. Demo w/5614 miles. List \$9850. Total payments \$8634.24

\$17988 per mo.

MONTE CARLOS!

2-Door LS Coup w/Std. Pwr. Steering & Brakes and opt. 5 Liter V-8, Auto Trans w/OD, Padded Landau Roof, Pwr. Seats/Windows/Locks/Trunk, Air Cond., Cruise Control, Tilt Wheel, Hvy Duty Battery, AM/FM Stereo Cassette w/Pwr. Antenna & More! Stock No. 6222. Demo w/7286 miles. List \$15,060. Total payments \$12,954.24

\$26988 per mo.

Crown's Suburban-Traded Cars

'85 CAVALIER CHEVY 4-dr. red, 4-cyl. auto trans, pwr steering & brakes, air cond., stereo, 5420 miles. Like new! \$6588	'84 IMPALA CHEVY 4-dr. 6-cyl. auto trans, pwr steering & brakes, air cond., stereo cassette, 22,116 miles. A real beauty! \$7988	'82 BONNEVILLE PONTIAC 4-dr. 6-cyl. auto trans, pwr steering & brakes, air cond., stereo, 52,612 mi. St. No. 2051P. Flawless cond! \$6488
'85 CUTLASS OLDS 4-dr. V-6, auto trans, pwr steering/brakes/windows/locks, air cond., stereo, tilt, 18,708 miles. Stock No. 3054P. Super shape! \$8988	'84 WAGON CHEVY Celebrity, black, 1000 rack, 6-cyl. auto trans, pwr steering & brakes, air cond., stereo, 17,923 miles. Showroom new! \$7588	'82 CITATION CHEVY 4-dr. hatchback, 6-cyl. auto trans, pwr steering & brakes, air cond., stereo, 40,068 mi. Great MPG! \$4288
'84 LE BARON CHRYSLER 1.6 brown & 4-cyl. auto trans, pwr steering & brakes, air cond., stereo, 21,833 mi. Flawless! \$6988	'83 SKYHAWK BUICK 1.8 2-dr. 4-cyl. auto trans, pwr steering & brakes, air cond., stereo, 45,977 miles. (Flawless cond!) \$5588	'82 GRAND PRIX PONTIAC 2-dr. red, stereo, air cond., stereo, pwr steering & brakes, auto trans, 6-cyl. 56,222 mi. A real beauty! \$5988
'84 WAGON CHEVY Caprice, 9-pass, 1000 rack, V-8, auto trans, pwr steering/brakes/seats/windows/locks, air cond., stereo cassette, 30K, cruise, 42,508 miles. Perfect family car! \$8988	'83 CENTURY BUICK 2-door, 4-dr. 6-cyl. auto trans, pwr steering/brakes/wind, air cond., stereo, 52,631 mi. St. No. 2908R. Excellent cond! \$7988	'82 LYNX MERCURY 4-dr. 4-cyl. eng, auto trans, pwr steering & brakes, air cond, stereo, 47,159 miles. Perfect! \$3988
		'82 MONTE CARLO CHEVY 2-dr. light red, 6-cyl. auto trans pwr steering & brakes, air cond., stereo, AM/FM stereo, 45,693 miles. Super sharp! \$5988

Crown Chevrolet

New Jersey's Chevrolet Underpricer

514 Washington Avenue, Belleville (201) 759-4200

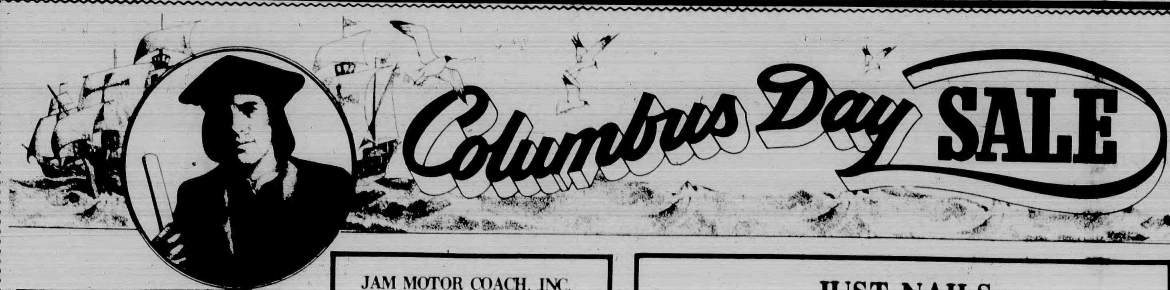
Advised payments are for 48 month closed end leases w/NO DOWN PAYMENT. 1 month refundable security deposit required.

**Good At
Thousands Of
Locations—
NATIONWIDE!**

THE PROVIDENT
MEMBER OF THE
FI
1ST NATIONWIDE NETWORK

CASH
24 HOURS A DAY
CHECK CASHING
COAST TO COAST
Visit Provident or call toll-free in New Jersey,
1-800-624-2806

THE PROVIDENT
Offices throughout New Jersey • Member FDIC
1ST NATIONWIDE NETWORK
THERE'S A PROVIDENT OFFICE NEAR YOU IN
Bayonne, Belleville, Bloomfield, Burlington Township,
Cherry Hill, Collingswood, Dumont, Dunellen, East Brunswick,
East Windsor, Green Brook, Jersey City, Leonia, Maple Shade,
Mount Holly, Northvale, Ocean Township, Point Pleasant,
Rancocas, Red Bank, Teaneck, Union City, West New York,
Westwood, Wilmsboro, Wall Township



HAVE YOU SEEN US YET?
We are a small boutique that carries junior & missy sizes

CORSETS DRESSES
SLACKS JUMP SUITS
SWEATERS JEWELRY
HAND BAGS

CONFETTI FASHIONS
282 Bloomfield Ave. Verona • 857-3883
Open Tue. Wed. & Fri. 10-4 • Thur. 10-6 • Sat. 10-5 • Closed Mon.

JAM MOTOR COACH, INC.
"STRETCH OUT IN STYLE"
PERSONALIZED LIMOUSINE SERVICE
WEDDINGS-FUNERALS-PROMS
NEW YORK CITY
ATLANTIC CITY-AIRPORTS
CALL 939-3604
Joseph A. Mastbeth, President

JUST NAILS
260 BELLEVUE AVENUE, UPPER MONTCLAIR, N.J.
744-3857
NOW OPEN 'TILL 8 TUESDAY THRU FRIDAY
FEATURING THE GEL SYSTEM
LASTS 3-TO 4 WEEKS. STRONGER THAN WRAPS.
NAIL ART SYSTEM

Barbara Desantis Les Carter
UNIQUE GIFT SHOP
Specializing in hand made items for showers, weddings, christenings, etc.
Monday thru Saturday
50% Discount on Plushes
Friday and Saturday
25% Discount on Everything in the Store
748-0155
Mon-Fri 10-8 20 Montgomery St.
Sat 10-6 Bloomfield, N.J. 07003

Forever Tan
featuring the WOLFF tanning system
FALL SPECIALS
\$50 per month unlimited sessions
\$29 1st visit receive FREE tanning product
WE OFFER THE LOWEST PRICES IN THE AREA
Receive a FREE T-SHIRT with one month's membership
260 Bellevue Ave., Upper Montclair
Above Joni's Hairdressing Salon
Open Weekdays 9 a.m.-11 p.m. Sat. & Sun. 9 a.m.-7 p.m.
PLEASE BRING THIS COUPON.
783-0077

Italian/American Dining Affordably Priced
ChristopherAnthony's Restaurant
(Located in the Riviera Tavern)

284-1788
26 Washington Ave. Nutley
New York Style Cafe
BE SEATED BEFORE 7:00 AND RECEIVE A COMPLIMENTARY GLASS OF WINE
Oct. 2 to Oct. 25

FOUNTAIN OF FLOWERS

340 BELLEVILLE AVE. BELLEVILLE
751-5089
• Pumpkins
• Halloween Balloons
• Long Stem Roses - \$19 a doz
• Fall Bouquets

Featuring fine corsetry and lingerie
noted for expert fittings
specialists for the mastectomy.
Mildred's
183 So. Brimington Ave. • Brimington
(201) 994-1364 • (201) 994-0271

Del Polito Hairdressers
Experience the latest and innovative discovery in nail art. A personal creative touch, oriented toward the individuals style and taste in colors and design.
High fashion nails achieved by state of the art air brushing.

12 Belleville Ave. Bloomfield, N.J.
748-8571
(opposite A & P Shopping Center)

The RUG CLEANERS
23 Willet Street Bloomfield
Truck Mounted
Carpet Steam Cleaning
24 Hour Emergency Floodwork
 Rug Cleaning (In-house or pick-up and delivery)
Homes - Offices - Apartments
Condos - Places of Business
Call Us! (201) 429-7770

TRIO & CO. NUTLEY JEWELERS
Choose a gift from our fine jewelry collection.

• WATCHES
• DIAMOND & GEMSTONE RINGS
• WEDDING BANIS
ALL AT DISCOUNT PRICES
USE OUR LAYAWAY PLAN
Personal Service
Expert Jewelry Repairs Done on Premises
667-8226 Hours: Mon. & Fri. 10-6:30 667-8628
Tues. Wed. Thurs. 10-6:30, Sat. 10-5
218 Franklin Ave., Nutley
Our New Location 4 Doors in From Centre St.
667-8628

OLIVE TREE CHILD CARE CENTERS

Ages 2-6
7:30 A.M.-5:30 P.M.
SPECIAL PROGRAMS
5 - Full Days
Kindergarten Full Day
3 Mornings, 9:30-12
Pre-Kindergarten, 3 Afternoons
Bloomfield 748-1984
Wayne 942-1910
Present this ad - 4th week free on new registration

OPEN SUN. & MON. **HAIR SKIN NAILS TANNING**

A Full Service Salon
1 Lackawanna Plaza (Pathmark Mall)
Montclair, N.J. • 783-1111
Hours: Mon-Tues. 9-6 Wed. 9-8
Thurs. & Fri. 9-9 Sat. 9-5 Sun. 9-4
Michael D. Serchio & Vincent Sangermano
Invite you to their Full Service Salon
Coupon Good Thru Oct. 30, 1986
TIPS WITH WRAPS
SILK OR LINEN \$29.95 Reg. 155
*WRAP YOUR OWN NATURAL NAILS
SILK OR LINEN \$19.95 Reg. 135
*PEDICURE SPECIAL \$18.00 Reg. 124
By Appointment, Selective Operators
20% OFF YOUR 1ST Body Wave, Hair Cut, High Lightening or any other service
\$5.00 off YOUR 1ST Professional Facial Treatment
Ballooney on Premises!

V. SYLVESTROS
Garden Meat Market

CHOICE & PRIME MEATS
FREEZER ORDERS AVAILABLE
Free Parking • Free Delivery • Food Stamps
166 GARDEN AVE., BELLEVILLE
759-1069
(Off Joralemon Betw. Union & Passaic)



Columbus Day SALE

DEL'S SHOE OUTLET

WHOLESALE AND RETAIL

112 FRANKLIN STREET
BELLEVILLE, NEW JERSEY 07109
TELEPHONE: 759-2360
40-42 FERRY ST., NEWARK
589-4646

We Have The Largest Variety
of Men's and Women's Shoes
DRESS - SPORTS - CASUAL
AND LEATHER

WOMEN'S SHOES - \$2.00 to \$10.00
MEN'S SHOES - \$10.00 to \$12.00
BOOTS \$15.00

MON. - TUES. - THURS. - FRI. 10 A.M. to 5 P.M.
WED. 10 A.M. to 4 P.M. SAT. 9:30 A.M. to 5:30 P.M.
'We Will Not Be Under Soled'

SPRING GARDEN FLORISTS



For Beautiful
Floral Arrangements
Winter, Spring, Summer
or Fall

• Free Delivery
(2 mile radius)
All over Essex, Bergen,
Hudson & Union Counties

Credit Cards Honored by Telephone

748-4070

399 BROAD ST.
BLOOMFIELD



WORLDWIDE
DELIVERIES

THE MAGIC COTTAGE NURSERY SCHOOL

393 WASHINGTON AVE.
BELLEVILLE
7:30 A.M. - 6 P.M.

(In Christ
Episcopal Church)



REGISTER NOW FOR FALL SESSIONS
ALL DAY KINDERGARTEN
NURSERY & DAY CARE SERVICES

CALL NOW

759-8758

Member Of Belleville Chamber of Commerce

PLAZA TRAVEL

- No Charge For Our Services
- Corporate Accounts Welcomed
- Free Ticket Delivery
- Individual and Group Tours/Cruises
- Vacation Travel Planners
- Fully Computerized Ticketing
- For the Fall, Cruise Discounts Avail
- Contact Us For Details



759-1800

360 FRANKLIN AVENUE
BELLEVILLE

Phil Agosta Josephine Zarra Restaino

SMITH CORONA ENTERPRISE XT KEYBOARD CORRECTING ELECTRIC TYPEWRITER



- Correction Button
- Power Space Key
- Easy to Set Margins
- Double Walled Case
- Handy Pencil Tabulator

Regular \$298.00

Special \$149

MANY OTHER SMITH CORONA MODELS
AVAILABLE



CLEARANCE SALE

On New And
Used

OFFICE FURNITURE



**THOMAS PRINTING AND
OFFICE SUPPLY**

313 Union Ave., Rutherford • 939-0509

OPEN MONDAY THRU FRIDAY 9-6, SATURDAY 9-5

Tootsie Toots!

Kids
Stop
Here
for Fall
Fashion
Preview!

Ride the
**FASHION
EXPRESS**

EVA JOA
SERGIO VALENTE
LOLLY TOGS

LEVIS

MEMBERS ONLY

Save up to

**70%
OFF**

Manufacturer's Suggested
Retail Prices

Kids Depot

210 MEADOWLAND PKWY. SECAUCUS • 348-0650

OPEN SUNDAY 12-5 DAILY 9-6 OPEN THURSDAY TIL 9 PM

VINNIES PIZZERIA



227 CENTRE ST.
NUTLEY, N.J.

667-1551

FREE DELIVERY
NUTLEY & BELLEVILLE

Sandy Lane Nursery School

"A Child's World Where
Playing Is Learning"

634 Mill Street
Belleville
751-6380



Days and hours to meet your
needs

HOURS: 7:30-5:45

Call or come in to register
School open to visitors

Development Program in

- Arts • Music • Skills
- Language • Social Development

Continuous day care programs for working mothers.
Nutritionally balanced Lunch.
State Licensed Certified School & Teachers.

**ACCEPTING FALL REGISTRATIONS
NOW**

Dedicated to a program of Early Childhood Education

LITTLE SCHOLAR NURSERY SCHOOL

Corner of Union & Little St.

FALL REGISTRATION
STILL AVAILABLE

Full time & part time hours

between 7:30 am & 5:30 pm

BREAKFAST HOUR 7:30 to 8:30

Ages 2 1/2 to 5 years, certified experienced

teachers, pediatric nurse, open door policy.

751-4050

MASCOLO'S FLORISTS



FLOWERS
FOR ALL OCCASIONS

FLOWERS
BY WIRE

FREE DELIVERY SERVICE
All Major Credit Cards Accepted

743-6251
417 Bloomfield Ave.
Bloomfield

Ellie's Closet
"Potpourri of Neat Things
for the Ultimate Consumer"

80 Church Street
Montclair, New Jersey
(201) 744-3055
Ellie Tuomey

THE NUTLEY SUN
BELLEVILLE TIMES
BLOOMFIELD LIFE

667-3000

Mon. thru Fri. 9:00 AM to 5:00 PM
Deadline - Tues. 12:00 Noon

CLASSIFIED INDEX

CHECK YOUR AD THE FIRST DAY OF PUBLICATION.
The Nutley Sun, the Belleville Times and the Bloomfield Life are responsible only for MAJOR errors in the first day's insertion.
CREDITS
Credits and adjustments are to be made only for errors which significantly affect the effectiveness of the ad, such as a wrong telephone or price. Credits will not be issued for typographical errors or misspelled words. The newspaper assumes no responsibility for MAJOR errors in the first day's publication.

All Classified Line Ads Appear in All Three Papers.
The Nutley Sun - 200 Bloomfield Ave. - Bloomfield, N.J.
and will appear in: abc TV-30, Channel 30
During "The Community Bulletin" Time Frame

01 WHEELS
05 Auto Sales
06 Auto Insurance
07 Auto Car Sales
09 Campers/Trailers
10 Financing
11 Mobile Homes/Boats/Scoters
12 Motorcycles/Scooters
13 Auto Accessories/Services
14 Parts
24 Auto Wreckers

025 ANNOUNCEMENTS
2585 Bids & Auctions
2587 Business Notices
2588 Entertainment
2589 General Notices
2590 Lost & Found
2591 Personal Notices
2592 Professional Notices
2593 Public Notices

027 CHILD CARE
2785 Baby Sitter
2795 Nursery Schools
2796 The School

029 DIAL-A-SERVICE
2842 Accounting/Taxes
2843 Air Conditioning
2845 Alarms
2846 Appliance Repair
2847 Automobile
2848 Boarding Houses
2849 Bookkeeping
2850 Carpentry
2851 Carpet Cleaning
2852 Cleaning
2853 Cleaning/Carpet Repair
2854 Cleaning Services
2855 Commercial Instruments
2856 Dating Service
2857 Decorating
2858 Driveways
2859 Electrician
2860 Entertainment
2861 Extensometers
2862 Fences
2863 Floors
2864 Furniture Service
2865 Garages
2866 Handyman
2867 Heating
2868 Home Improvement
2869 High Pressure Cleaning
2870 Insulating
2871 Junk Dealer
2872 Landscaping
2873 Lawn
2874 Limo Service
2875 Lock & Glass
2876 Mailbox/Salon
2877 Masonry
2878 Messenger Service
2879 Moving Services
2880 Moving & Storage
2881 Nursing Services
2882 Painting
2883 Piano Service
2884 Pet Grooming
2885 Plumbing
2886 Plumbing
2887 Public Relations
2888 Recreation
2889 Relocation
2890 Resumes
2891 Roofing
2892 Rubbish Removal
2893 Security Guards
2894 Security Systems
2895 Signage
2896 Tax Service
2897 The Contractors
2898 Towing Service
2899 Travel
2900 Tree Service
2901 TV & Video Rentals
2902 TV & Video Repairs
2903 Typing Services
2904 Translations
2905 Typing
2906 Wall Papering
2907 Wedding To Buy
2908 Weddings
2909 Weight Control
2910 Windows

033 FINANCIAL
3385 Business Opportunities
3387 Business Wanted
3388 Insurance
3389 Loans
3390 Partnerships/Benefits
3391 Stocks & Bonds
3392 T.V.

035 INSTRUCTION
3545 Arts & Crafts
3546 Language
3547 Music Instruction
3548 Photography
3549 Schools
3550 Tutoring
3551 Vocational Training

037 MERCHANDISE
3745 Antiques
3747 Appliances
3748 Automobiles for Rent
3749 Automobiles for Sale
3750 Cameras
3751 Commercial Equipment
3752 Flea Markets
3753 Furniture
3754 Games
3755 Heavy Equipment
3756 Hobbies & Crafts
3757 Jewelry/Apparel
3758 Lawn/Garden
3759 Musical Instruments
3760 Office Equipment
3761 Sporting Goods
3762 T.V./Video/Stereo
3763 Video/Computer

039 PETS & LIVESTOCK
3950 Fish
3951 Livestock & Supplies
3952 Pet Accessories
3953 Pet Announcements
3954 Pet Supplies
3955 Puppies Wanted
3956 Veterinary Services

041 REAL ESTATE
4155 Condominiums for Sale
4156 Farms & Acreage
4157 Houses for Sale
4158 Industrial & Commercial
4159 Investment Properties
4160 Property Management
4161 Real Estate Wanted
4162 Real Estate Brokers
4163 Real Estate Consultants
4164 Real Estate Offices
4165 Real Estate Signs
4166 Real Estate Transactions
4167 Real Estate Tours
4168 Real Estate Websites
4169 Real Estate Yards
4170 Real Estate Zoning

043 RENTALS
4345 Apartments Furnished
4346 Apartments Unfurnished
4347 Condos for Rent
4348 Condos for Sale
4349 Houses for Rent
4350 Houses for Sale
4351 Industrial Rentals
4352 Office Rentals
4353 Retail Rentals
4354 Storage Units
4355 Vacation Rentals

05 AUTO SALES
BELLEVILLE YELLOW CAR
OUT OF TOWN TAX
SERVICE ANYWHERE
DEPENDABLE SERVICE
759-2000

1985 Toyota Tercel station wagon 4 door, black, automatic, 4 wheel drive, a/c, p.s., p.h., air, stereo, cassette, 67,000 miles, automatic, sunroof, 11,150 miles, \$9,700. 667-7601

1980 Pontiac Firebird 4 door, many extras \$4,500 or B.O. 751-7575

1979 Saab 900 Turbo 40,000 miles, excellent condition, \$4,500. Call 450-0377

1985 Honda Mini-Hawk 400 cc, excellent condition, over 200 miles, Best offer, 667-5687 after 1 p.m.

1981 VOLKSWAGEN 4 door sedan, Excellent condition, New tires, Call 450-0377

1984 Datsun 800 2x4 Fully loaded, good condition, \$4,850.00

1974 IMPALA CHEVY 4 door, excellent condition, air conditioning, V-8 engine, power brakes, steering, 100,000 miles, \$1,500.00. Call 450-0377

1979 MI-RIDE 450 cc Silver, loaded with sunroof, \$12,000 or B.O. Call 450-0377

1967 CAMARO CONVERTIBLE RS, COMPLETE V-8, 105,000 miles, BEAUTIFUL CAR, \$6,800. Call 450-0377

1981 Chevy Cavalier standard shift, 4 speed, 7000 miles, a/c, good condition, \$2,200. After 6 p.m. 751-7575

1981 Horizon 4 door, a/c, AM/FM cassette tape, 100,000 miles, \$7,995.00

1980 Pontiac Grand Prix 6000 V-6, 100,000 miles, great, 80,000 miles, \$9,900. 667-1115

1984 Camaro, 2.8, 100,000 miles, 20,000 miles, must sacrifice, 759-3000 after 4PM

73 Mazda 60 3 door, new exhaust, new battery, needs clutch, \$400.00 or best offer, 667-1115

3950 Fish
3951 Livestock & Supplies
3952 Pet Accessories
3953 Pet Announcements
3954 Pet Supplies
3955 Puppies Wanted
3956 Veterinary Services

4155 Condominiums for Sale
4156 Farms & Acreage
4157 Houses for Sale
4158 Industrial & Commercial
4159 Investment Properties
4160 Property Management
4161 Real Estate Wanted
4162 Real Estate Brokers
4163 Real Estate Consultants
4164 Real Estate Offices
4165 Real Estate Signs
4166 Real Estate Transactions
4167 Real Estate Tours
4168 Real Estate Websites
4169 Real Estate Yards
4170 Real Estate Zoning

4345 Apartments Furnished
4346 Apartments Unfurnished
4347 Condos for Rent
4348 Condos for Sale
4349 Houses for Rent
4350 Houses for Sale
4351 Industrial Rentals
4352 Office Rentals
4353 Retail Rentals
4354 Storage Units
4355 Vacation Rentals

4591 4346 or 991-081
4592 4346 or 991-081
4593 4346 or 991-081
4594 4346 or 991-081
4595 4346 or 991-081
4596 4346 or 991-081
4597 4346 or 991-081
4598 4346 or 991-081
4599 4346 or 991-081

4591 4346 or 991-081
4592 4346 or 991-081
4593 4346 or 991-081
4594 4346 or 991-081
4595 4346 or 991-081
4596 4346 or 991-081
4597 4346 or 991-081
4598 4346 or 991-081
4599 4346 or 991-081

4591 4346 or 991-081
4592 4346 or 991-081
4593 4346 or 991-081
4594 4346 or 991-081
4595 4346 or 991-081
4596 4346 or 991-081
4597 4346 or 991-081
4598 4346 or 991-081
4599 4346 or 991-081

4591 4346 or 991-081
4592 4346 or 991-081
4593 4346 or 991-081
4594 4346 or 991-081
4595 4346 or 991-081
4596 4346 or 991-081
4597 4346 or 991-081
4598 4346 or 991-081
4599 4346 or 991-081

4591 4346 or 991-081
4592 4346 or 991-081
4593 4346 or 991-081
4594 4346 or 991-081
4595 4346 or 991-081
4596 4346 or 991-081
4597 4346 or 991-081
4598 4346 or 991-081
4599 4346 or 991-081

4591 4346 or 991-081
4592 4346 or 991-081
4593 4346 or 991-081
4594 4346 or 991-081
4595 4346 or 991-081
4596 4346 or 991-081
4597 4346 or 991-081
4598 4346 or 991-081
4599 4346 or 991-081

4591 4346 or 991-081
4592 4346 or 991-081
4593 4346 or 991-081
4594 4346 or 991-081
4595 4346 or 991-081
4596 4346 or 991-081
4597 4346 or 991-081
4598 4346 or 991-081
4599 4346 or 991-081

4591 4346 or 991-081
4592 4346 or 991-081
4593 4346 or 991-081
4594 4346 or 991-081
4595 4346 or 991-081
4596 4346 or 991-081
4597 4346 or 991-081
4598 4346 or 991-081
4599 4346 or 991-081

4591 4346 or 991-081
4592 4346 or 991-081
4593 4346 or 991-081
4594 4346 or 991-081
4595 4346 or 991-081
4596 4346 or 991-081
4597 4346 or 991-081
4598 4346 or 991-081
4599 4346 or 991-081

CLASSIFIED YOUR ADS ARE SURE TO GET RESULTS!

24 AUTO WRECKERS
2785 NURSERY SCHOOLS
2795 NURSERY SCHOOLS
3105 CLERICAL
3105 CLERICAL
3105 GENERAL OPPORTUNITIES

WHEELS
05 AUTO SALES

BELLEVILLE YELLOW CAR
OUT OF TOWN TAX
SERVICE ANYWHERE
DEPENDABLE SERVICE
759-2000

1985 Toyota Tercel station wagon 4 door, black, automatic, 4 wheel drive, a/c, p.s., p.h., air, stereo, cassette, 67,000 miles, automatic, sunroof, 11,150 miles, \$9,700. 667-7601

1980 Pontiac Firebird 4 door, many extras \$4,500 or B.O. 751-7575

1979 Saab 900 Turbo 40,000 miles, excellent condition, \$4,500. Call 450-0377

1985 Honda Mini-Hawk 400 cc, excellent condition, over 200 miles, Best offer, 667-5687 after 1 p.m.

1981 VOLKSWAGEN 4 door sedan, Excellent condition, New tires, Call 450-0377

1984 Datsun 800 2x4 Fully loaded, good condition, \$4,850.00

1974 IMPALA CHEVY 4 door, excellent condition, air conditioning, V-8 engine, power brakes, steering, 100,000 miles, \$1,500.00. Call 450-0377

1979 MI-RIDE 450 cc Silver, loaded with sunroof, \$12,000 or B.O. Call 450-0377

1967 CAMARO CONVERTIBLE RS, COMPLETE V-8, 105,000 miles, BEAUTIFUL CAR, \$6,800. Call 450-0377

1981 Chevy Cavalier standard shift, 4 speed, 7000 miles, a/c, good condition, \$2,200. After 6 p.m. 751-7575

1981 Horizon 4 door, a/c, AM/FM cassette tape, 100,000 miles, \$7,995.00

1980 Pontiac Grand Prix 6000 V-6, 100,000 miles, great, 80,000 miles, \$9,900. 667-1115

1984 Camaro, 2.8, 100,000 miles, 20,000 miles, must sacrifice, 759-3000 after 4PM

73 Mazda 60 3 door, new exhaust, new battery, needs clutch, \$400.00 or best offer, 667-1115

3950 Fish
3951 Livestock & Supplies
3952 Pet Accessories
3953 Pet Announcements
3954 Pet Supplies
3955 Puppies Wanted
3956 Veterinary Services

4155 Condominiums for Sale
4156 Farms & Acreage
4157 Houses for Sale
4158 Industrial & Commercial
4159 Investment Properties
4160 Property Management
4161 Real Estate Wanted
4162 Real Estate Brokers
4163 Real Estate Consultants
4164 Real Estate Offices
4165 Real Estate Signs
4166 Real Estate Transactions
4167 Real Estate Tours
4168 Real Estate Websites
4169 Real Estate Yards
4170 Real Estate Zoning

4345 Apartments Furnished
4346 Apartments Unfurnished
4347 Condos for Rent
4348 Condos for Sale
4349 Houses for Rent
4350 Houses for Sale
4351 Industrial Rentals
4352 Office Rentals
4353 Retail Rentals
4354 Storage Units
4355 Vacation Rentals

4591 4346 or 991-081
4592 4346 or 991-081
4593 4346 or 991-081
4594 4346 or 991-081
4595 4346 or 991-081
4596 4346 or 991-081
4597 4346 or 991-081
4598 4346 or 991-081
4599 4346 or 991-081

4591 4346 or 991-081
4592 4346 or 991-081
4593 4346 or 991-081
4594 4346 or 991-081
4595 4346 or 991-081
4596 4346 or 991-081
4597 4346 or 991-081
4598 4346 or 991-081
4599 4346 or 991-081

4591 4346 or 991-081
4592 4346 or 991-081
4593 4346 or 991-081
4594 4346 or 991-081
4595 4346 or 991-081
4596 4346 or 991-081
4597 4346 or 991-081
4598 4346 or 991-081
4599 4346 or 991-081

4591 4346 or 991-081
4592 4346 or 991-081
4593 4346 or 991-081
4594 4346 or 991-081
4595 4346 or 991-081
4596 4346 or 991-081
4597 4346 or 991-081
4598 4346 or 991-081
4599 4346 or 991-081

4591 4346 or 991-081
4592 4346 or 991-081
4593 4346 or 991-081
4594 4346 or 991-081
4595 4346 or 991-081
4596 4346 or 991-081
4597 4346 or 991-081
4598 4346 or 991-081
4599 4346 or 991-081

4591 4346 or 991-081
4592 4346 or 991-081
4593 4346 or 991-081
4594 4346 or 991-081
4595 4346 or 991-081
4596 4346 or 991-081
4597 4346 or 991-081
4598 4346 or 991-081
4599 4346 or 991-081

4591 4346 or 991-081
4592 4346 or 991-081
4593 4346 or 991-081
4594 4346 or 991-081
4595 4346 or 991-081
4596 4346 or 991-081
4597 4346 or 991-081
4598 4346 or 991-081
4599 4346 or 991-081

4591 4346 or 991-081
4592 4346 or 991-081
4593 4346 or 991-081
4594 4346 or 991-081
4595 4346 or 991-081
4596 4346 or 991-081
4597 4346 or 991-081
4598 4346 or 991-081
4599 4346 or 991-081

4591 4346 or 991-081
4592 4346 or 991-081
4593 4346 or 991-081
4594 4346 or 991-081
4595 4346 or 991-081
4596 4346 or 991-081
4597 4346 or 991-081
4598 4346 or 991-081
4599 4346 or 991-081

4591 4346 or 991-081
4592 4346 or 991-081
4593 4346 or 991-081
4594 4346 or 991-081
4595 4346 or 991-081
4596 4346 or 991-081
4597 4346 or 991-081
4598 4346 or 991-081
4599 4346 or 991-081

4591 4346 or 991-081
4592 4346 or 991-081
4593 4346 or 991-081
4594 4346 or 991-081
4595 4346 or 991-081
4596 4346 or 991-081
4597 4346 or 991-081
4598 4346 or 991-081
4599 4346 or 991-081

4591 4346 or 991-081
4592 4346 or 991-081
4593 4346 or 991-081
4594 4346 or 991-081
4595 4346 or 991-081
4596 4346 or 991-081
4597 4346 or 991-081
4598 4346 or 991-081
4599 4346 or 991-081

4591 4346 or 991-081
4592 4346 or 991-081
4593 4346 or 991-081
4594 4346 or 991-081
4595 4346 or 991-081
4596 4346 or 991-081
4597 4346 or 991-081
4598 4346 or 991-081
4599 4346 or 991-081

4591 4346 or 991-081
4592 4346 or 991-081
4593 4346 or 991-081
4594 4346 or 991-081
4595 4346 or 991-081
4596 4346 or 991-081
4597 4346 or 991-081
4598 4346 or 991-081
4599 4346 or 991-081

4591 4346 or 991-081
4592 4346 or 991-081
4593 4346 or 991-081
4594 4346 or 991-081
4595 4346 or 991-081
4596 4346 or 991-081
4597 4346 or 991-081
4598 4346 or 991-081
4599 4346 or 991-081

4591 4346 or 991-081
4592 4346 or 991-081
4593 4346 or 991-081
4594 4346 or 991-081
4595 4346 or 991-081
4596 4346 or 991-081
4597 4346 or 991-081
4598 4346 or 991-081
4599 4346 or 991-081

4591 4346 or 991-081
4592 4346 or 991-081
4593 4346 or 991-081
4594 4346 or 991-081
4595 4346 or 991-081
4596 4346 or 991-081
4597 4346 or 991-081
4598 4346 or 991-081
4599 4346 or 991-081

4591 4346 or 991-081
4592 4346 or 991-081
4593 4346 or 991-081
4594 4346 or 991-081
4595 4346 or 991-081
4596 4346 or 991-081
4597 4346 or 991-081
4598 4346 or 991-081
4599 4346 or 991-081

4591 4346 or 991-081
4592 4346 or 991-081
4593 4346 or 991-081
4594 4346 or 991-081
4595 4346 or 991-081
4596 4346 or 991-081
4597 4346 or 991-081
4598 4346 or 991-081
4599 4346 or 991-081

4591 4346 or 991-081
4592 4346 or 991-081
4593 4346 or 991-081
4594 4346 or 991-081
4595 4346 or 991-081
4596 4346 or 991-081
4597 4346 or 991-081
4598 4346 or 991-081
4599 4346 or 991-081

4591 4346 or 991-081
4592 4346 or 991-081
4593 4346 or 991-081
4594 4346 or 991-081
4595 4346 or 991-081
4596 4346 or 991-081
4597 4346 or 991-081
4598 4346 or 991-081
4599 4346 or 991-081

4591 4346 or 991-081
4592 4346 or 991-081
4593 4346 or 991-081
4594 4346 or 991-081
4595 4346 or 991-081
4596 4346 or 991-081
4597 4346 or 991-081
4598 4346 or 991-081
4599 4346 or 991-081

4591 4346 or 991-081
4592 4346 or 991-081
4593 4346 or 991-081
4594 4346 or 991-081
4595 4346 or 991-081
4596 4346 or 991-081
4597 4346 or 991-081
4598 4346 or 991-081
4599 4346 or 991-081

4591 4346 or 991-081
4592 4346 or 991-081
4593 4346 or 991-081
4594 4346 or 991-081
4595 4346 or 991-081
4596 4346 or 991-081
4597 4346 or 991-081
4598 4346 or 991-081
459

DIAL-A-SERVICE

DIAL-A-SERVICE

3165 GENERAL OPPORTUNITIES

2945 ALARMS

LOCK & GLASS
Custom Police & Mirror
Framing
• Storm Doors & Windows
• New & Repaired
• Tub & Shower Enclosures
• Custom mirrored walls
• Locks installed, repaired
• rekeyed
• Wood doors installed
• Keys made, Lagged keys
• All types of window glass
• installed
• Sliding glass doors
• Sliding mirror doors
• Windows
• 255 Hoover Ave.
• Interiors of J.R.K. & Co.
• Bloomfield 748-0774

2949 APPLIANCE REPAIRS

SEWING MACHINE
REPAIRS
• ALL MAKES
• FREE ESTIMATES
• 10 YEARS EXPERIENCE
• 991-2991

WE REPAIR

• Washers • Dryers
• Refrigerators
• Freezers
• Air Conditioning
• Electrical & Central
• Heating & Cooling
• SERVICE 667-9278

LAWN MOWER REPAIRS

SUNBEAM
Specialists
Parts & Service
Call 748-8619

2957 CARPET CLEANING

FLANN'S CARPET
SERVICE
• Dyeing, Redesigning
• Stain Removal
• Free Estimates
• 991-4185

2958 CARPET FURNITURE & DRAPERY CLEANING

FULL
STEAM AHEAD
• Carpet Steam Clean
• Dry cleaning
• Upholstery cleaning
• Drapery cleaning
• American
• Carpet Care
• 332-1121

2959 CLEANING SERVICES

BRITISH STAR
CLEANING SERVICE
Specializing in office and
home cleaning
Owner Operated
Fully Insured and Bonded
Call 667-8700
24 hrs a day
seven days a week

A POLISH TOUCH HOME CLEANING SERVICE

• We Wash Walls
• Windows • Bathrooms
• Kitchens • Bedrooms
• Vacuum • Dishes
• Polish etc.
• FREE-ESTIMATE
• Call 998-0422

A cleaning service, call

change your life & make
things so much easier
Just try us 1 time & I'll
be your first joy-ant
again
• Call Bell
• 675-7918

2961 CONSTRUCTION

J. CAPANEAR
GENERAL
CONTRACTOR
• 485-1111

2962 DRIVEWAYS

ASPHALT
PAVING
• DRIVEWAYS
• PARKING LOTS
• CONCRETE WALKS
• STEPS
• FREE ESTIMATES
• FULLY INSURED
• FRANK J.
• SCAROLA, INC.
• 991-P-A-I-R

KEN'S DRIVEWAY SEALING

Reas. Top Quality
Work
Call 235-9222
Weekdays after 4 p.m.
Anytime Sat. or Sun.
735-87

2965 ELECTRICIANS

DE LIZZO ELECTRICAL
CONTRACTING, INC.
Residential
• No job too small or too far
• FREE ESTIMATES
• Call 661-2937
• License No. 4801

VALERA ELECTRIC

• Residential
• Commercial
• 24 Hour Emergency
• Lic. No. 7960
• Call 279-4070

2967 ENTERTAINMENT

D.J. FOR ALL
OCCASIONS
SOUNDS
BY SPANKY
All types of
music under \$200
• Call 511 after 3:00
• 941-2010

2968 FENCES

V & L CO.
• Residential
• 1/2" x 4" x 6"
• 1/2" x 6" x 8"
• 1/2" x 8" x 10"
• 1/2" x 10" x 12"
• 1/2" x 12" x 14"
• 1/2" x 14" x 16"
• 1/2" x 16" x 18"
• 1/2" x 18" x 20"
• 1/2" x 20" x 22"
• 1/2" x 22" x 24"
• 1/2" x 24" x 26"
• 1/2" x 26" x 28"
• 1/2" x 28" x 30"
• 1/2" x 30" x 32"
• 1/2" x 32" x 34"
• 1/2" x 34" x 36"
• 1/2" x 36" x 38"
• 1/2" x 38" x 40"
• 1/2" x 40" x 42"
• 1/2" x 42" x 44"
• 1/2" x 44" x 46"
• 1/2" x 46" x 48"
• 1/2" x 48" x 50"
• 1/2" x 50" x 52"
• 1/2" x 52" x 54"
• 1/2" x 54" x 56"
• 1/2" x 56" x 58"
• 1/2" x 58" x 60"
• 1/2" x 60" x 62"
• 1/2" x 62" x 64"
• 1/2" x 64" x 66"
• 1/2" x 66" x 68"
• 1/2" x 68" x 70"
• 1/2" x 70" x 72"
• 1/2" x 72" x 74"
• 1/2" x 74" x 76"
• 1/2" x 76" x 78"
• 1/2" x 78" x 80"
• 1/2" x 80" x 82"
• 1/2" x 82" x 84"
• 1/2" x 84" x 86"
• 1/2" x 86" x 88"
• 1/2" x 88" x 90"
• 1/2" x 90" x 92"
• 1/2" x 92" x 94"
• 1/2" x 94" x 96"
• 1/2" x 96" x 98"
• 1/2" x 98" x 100"
• 1/2" x 100" x 102"
• 1/2" x 102" x 104"
• 1/2" x 104" x 106"
• 1/2" x 106" x 108"
• 1/2" x 108" x 110"
• 1/2" x 110" x 112"
• 1/2" x 112" x 114"
• 1/2" x 114" x 116"
• 1/2" x 116" x 118"
• 1/2" x 118" x 120"
• 1/2" x 120" x 122"
• 1/2" x 122" x 124"
• 1/2" x 124" x 126"
• 1/2" x 126" x 128"
• 1/2" x 128" x 130"
• 1/2" x 130" x 132"
• 1/2" x 132" x 134"
• 1/2" x 134" x 136"
• 1/2" x 136" x 138"
• 1/2" x 138" x 140"
• 1/2" x 140" x 142"
• 1/2" x 142" x 144"
• 1/2" x 144" x 146"
• 1/2" x 146" x 148"
• 1/2" x 148" x 150"
• 1/2" x 150" x 152"
• 1/2" x 152" x 154"
• 1/2" x 154" x 156"
• 1/2" x 156" x 158"
• 1/2" x 158" x 160"
• 1/2" x 160" x 162"
• 1/2" x 162" x 164"
• 1/2" x 164" x 166"
• 1/2" x 166" x 168"
• 1/2" x 168" x 170"
• 1/2" x 170" x 172"
• 1/2" x 172" x 174"
• 1/2" x 174" x 176"
• 1/2" x 176" x 178"
• 1/2" x 178" x 180"
• 1/2" x 180" x 182"
• 1/2" x 182" x 184"
• 1/2" x 184" x 186"
• 1/2" x 186" x 188"
• 1/2" x 188" x 190"
• 1/2" x 190" x 192"
• 1/2" x 192" x 194"
• 1/2" x 194" x 196"
• 1/2" x 196" x 198"
• 1/2" x 198" x 200"
• 1/2" x 200" x 202"
• 1/2" x 202" x 204"
• 1/2" x 204" x 206"
• 1/2" x 206" x 208"
• 1/2" x 208" x 210"
• 1/2" x 210" x 212"
• 1/2" x 212" x 214"
• 1/2" x 214" x 216"
• 1/2" x 216" x 218"
• 1/2" x 218" x 220"
• 1/2" x 220" x 222"
• 1/2" x 222" x 224"
• 1/2" x 224" x 226"
• 1/2" x 226" x 228"
• 1/2" x 228" x 230"
• 1/2" x 230" x 232"
• 1/2" x 232" x 234"
• 1/2" x 234" x 236"
• 1/2" x 236" x 238"
• 1/2" x 238" x 240"
• 1/2" x 240" x 242"
• 1/2" x 242" x 244"
• 1/2" x 244" x 246"
• 1/2" x 246" x 248"
• 1/2" x 248" x 250"
• 1/2" x 250" x 252"
• 1/2" x 252" x 254"
• 1/2" x 254" x 256"
• 1/2" x 256" x 258"
• 1/2" x 258" x 260"
• 1/2" x 260" x 262"
• 1/2" x 262" x 264"
• 1/2" x 264" x 266"
• 1/2" x 266" x 268"
• 1/2" x 268" x 270"
• 1/2" x 270" x 272"
• 1/2" x 272" x 274"
• 1/2" x 274" x 276"
• 1/2" x 276" x 278"
• 1/2" x 278" x 280"
• 1/2" x 280" x 282"
• 1/2" x 282" x 284"
• 1/2" x 284" x 286"
• 1/2" x 286" x 288"
• 1/2" x 288" x 290"
• 1/2" x 290" x 292"
• 1/2" x 292" x 294"
• 1/2" x 294" x 296"
• 1/2" x 296" x 298"
• 1/2" x 298" x 300"
• 1/2" x 300" x 302"
• 1/2" x 302" x 304"
• 1/2" x 304" x 306"
• 1/2" x 306" x 308"
• 1/2" x 308" x 310"
• 1/2" x 310" x 312"
• 1/2" x 312" x 314"
• 1/2" x 314" x 316"
• 1/2" x 316" x 318"
• 1/2" x 318" x 320"
• 1/2" x 320" x 322"
• 1/2" x 322" x 324"
• 1/2" x 324" x 326"
• 1/2" x 326" x 328"
• 1/2" x 328" x 330"
• 1/2" x 330" x 332"
• 1/2" x 332" x 334"
• 1/2" x 334" x 336"
• 1/2" x 336" x 338"
• 1/2" x 338" x 340"
• 1/2" x 340" x 342"
• 1/2" x 342" x 344"
• 1/2" x 344" x 346"
• 1/2" x 346" x 348"
• 1/2" x 348" x 350"
• 1/2" x 350" x 352"
• 1/2" x 352" x 354"
• 1/2" x 354" x 356"
• 1/2" x 356" x 358"
• 1/2" x 358" x 360"
• 1/2" x 360" x 362"
• 1/2" x 362" x 364"
• 1/2" x 364" x 366"
• 1/2" x 366" x 368"
• 1/2" x 368" x 370"
• 1/2" x 370" x 372"
• 1/2" x 372" x 374"
• 1/2" x 374" x 376"
• 1/2" x 376" x 378"
• 1/2" x 378" x 380"
• 1/2" x 380" x 382"
• 1/2" x 382" x 384"
• 1/2" x 384" x 386"
• 1/2" x 386" x 388"
• 1/2" x 388" x 390"
• 1/2" x 390" x 392"
• 1/2" x 392" x 394"
• 1/2" x 394" x 396"
• 1/2" x 396" x 398"
• 1/2" x 398" x 400"
• 1/2" x 400" x 402"
• 1/2" x 402" x 404"
• 1/2" x 404" x 406"
• 1/2" x 406" x 408"
• 1/2" x 408" x 410"
• 1/2" x 410" x 412"
• 1/2" x 412" x 414"
• 1/2" x 414" x 416"
• 1/2" x 416" x 418"
• 1/2" x 418" x 420"
• 1/2" x 420" x 422"
• 1/2" x 422" x 424"
• 1/2" x 424" x 426"
• 1/2" x 426" x 428"
• 1/2" x 428" x 430"
• 1/2" x 430" x 432"
• 1/2" x 432" x 434"
• 1/2" x 434" x 436"
• 1/2" x 436" x 438"
• 1/2" x 438" x 440"
• 1/2" x 440" x 442"
• 1/2" x 442" x 444"
• 1/2" x 444" x 446"
• 1/2" x 446" x 448"
• 1/2" x 448" x 450"
• 1/2" x 450" x 452"
• 1/2" x 452" x 454"
• 1/2" x 454" x 456"
• 1/2" x 456" x 458"
• 1/2" x 458" x 460"
• 1/2" x 460" x 462"
• 1/2" x 462" x 464"
• 1/2" x 464" x 466"
• 1/2" x 466" x 468"
• 1/2" x 468" x 470"
• 1/2" x 470" x 472"
• 1/2" x 472" x 474"
• 1/2" x 474" x 476"
• 1/2" x 476" x 478"
• 1/2" x 478" x 480"
• 1/2" x 480" x 482"
• 1/2" x 482" x 484"
• 1/2" x 484" x 486"
• 1/2" x 486" x 488"
• 1/2" x 488" x 490"
• 1/2" x 490" x 492"
• 1/2" x 492" x 494"
• 1/2" x 494" x 496"
• 1/2" x 496" x 498"
• 1/2" x 498" x 500"
• 1/2" x 500" x 502"
• 1/2" x 502" x 504"
• 1/2" x 504" x 506"
• 1/2" x 506" x 508"
• 1/2" x 508" x 510"
• 1/2" x 510" x 512"
• 1/2" x 512" x 514"
• 1/2" x 514" x 516"
• 1/2" x 516" x 518"
• 1/2" x 518" x 520"
• 1/2" x 520" x 522"
• 1/2" x 522" x 524"
• 1/2" x 524" x 526"
• 1/2" x 526" x 528"
• 1/2" x 528" x 530"
• 1/2" x 530" x 532"
• 1/2" x 532" x 534"
• 1/2" x 534" x 536"
• 1/2" x 536" x 538"
• 1/2" x 538" x 540"
• 1/2" x 540" x 542"
• 1/2" x 542" x 544"
• 1/2" x 544" x 546"
• 1/2" x 546" x 548"
• 1/2" x 548" x 550"
• 1/2" x 550" x 552"
• 1/2" x 552" x 554"
• 1/2" x 554" x 556"
• 1/2" x 556" x 558"
• 1/2" x 558" x 560"
• 1/2" x 560" x 562"
• 1/2" x 562" x 564"
• 1/2" x 564" x 566"
• 1/2" x 566" x 568"
• 1/2" x 568" x 570"
• 1/2" x 570" x 572"
• 1/2" x 572" x 574"
• 1/2" x 574" x 576"
• 1/2" x 576" x 578"
• 1/2" x 578" x 580"
• 1/2" x 580" x 582"
• 1/2" x 582" x 584"
• 1/2" x 584" x 586"
• 1/2" x 586" x 588"
• 1/2" x 588" x 590"
• 1/2" x 590" x 592"
• 1/2" x 592" x 594"
• 1/2" x 594" x 596"
• 1/2" x 596" x 598"
• 1/2" x 598" x 600"
• 1/2" x 600" x 602"
• 1/2" x 602" x 604"
• 1/2" x 604" x 606"
• 1/2" x 606" x 608"
• 1/2" x 608" x 610"
• 1/2" x 610" x 612"
• 1/2" x 612" x 614"
• 1/2" x 614" x 616"
• 1/2" x 616" x 618"
• 1/2" x 618" x 620"
• 1/2" x 620" x 622"
• 1/2" x 622" x 624"
• 1/2" x 624" x 626"
• 1/2" x 626" x 628"
• 1/2" x 628" x 630"
• 1/2" x 630" x 632"
• 1/2" x 632" x 634"
• 1/2" x 634" x 636"
• 1/2" x 636" x 638"
• 1/2" x 638" x 640"
• 1/2" x 640" x 642"
• 1/2" x 642" x 644"
• 1/2" x 644" x 646"
• 1/2" x 646" x 648"
• 1/2" x 648" x 650"
• 1/2" x 650" x 652"
• 1/2" x 652" x 654"
• 1/2" x 654" x 656"
• 1/2" x 656" x 658"
• 1/2" x 658" x 660"
• 1/2" x 660" x 662"
• 1/2" x 662" x 664"
• 1/2" x 664" x 666"
• 1/2" x 666" x 668"
• 1/2" x 668" x 670"
• 1/2" x 670" x 672"
• 1/2" x 672" x 674"
• 1/2" x 674" x 676"
• 1/2" x 676" x 678"
• 1/2" x 678" x 680"
• 1/2" x 680" x 682"
• 1/2" x 682" x 684"
• 1/2" x 684" x 686"
• 1/2" x 686" x 688"
• 1/2" x 688" x 690"
• 1/2" x 690" x 692"
• 1/2" x 692" x 694"
• 1/2" x 694" x 696"
• 1/2" x 696" x 698"
• 1/2" x 698" x 700"
• 1/2" x 700" x 702"
• 1/2" x 702" x 704"
• 1/2" x 704" x 706"
• 1/2" x 706" x 708"
• 1/2" x 708" x 710"
• 1/2" x 710" x 712"
• 1/2" x 712" x 714"
• 1/2" x 714" x 716"
• 1/2" x 716" x 718"
• 1/2" x 718" x 720"
• 1/2" x 720" x 722"
• 1/2" x 722" x 724"
• 1/2" x 724" x 726"
• 1/2" x 726" x 728"
• 1/2" x 728" x 730"
• 1/2" x 730" x 732"
• 1/2" x 732" x 734"
• 1/2" x 734" x 736"
• 1/2" x 736" x 738"
• 1/2" x 738" x 740"
• 1/2" x 740" x 742"
• 1/2" x 742" x 744"
• 1/2" x 744" x 746"
• 1/2" x 746" x 748"
• 1/2" x 748" x 750"
• 1/2" x 750" x 752"
• 1/2" x 752" x 754"
• 1/2" x 754" x 756"
• 1/2" x 756" x 758"
• 1/2" x 758" x 760"
• 1/2" x 760" x 762"
• 1/2" x 762" x 764"
• 1/2" x 764" x 766"
• 1/2" x 766" x 768"
• 1/2" x 768" x 770"
• 1/2" x 770" x 772"
• 1/2" x 772" x 774"
• 1/2" x 774" x 776"
• 1/2" x 776" x 778"
• 1/2" x 778" x 780"
• 1/2" x 780" x 782"
• 1/2" x 782" x 784"
• 1/2" x 784" x 786"
• 1/2" x 786" x 788"
• 1/2" x 788" x 790"
• 1/2" x 790" x 792"
• 1/2" x 792" x 794"
• 1/2" x 794" x 796"
• 1/2" x 796" x 798"
• 1/2" x 798" x 800"
• 1/2" x 800" x 802"
• 1/2" x 802" x 804"
• 1/2" x 804" x 806"
• 1/2" x 806" x 808"
• 1/2" x 808" x 810"
• 1/2" x 810" x 812"
• 1/2" x 812" x 814"
• 1/2" x 814" x 816"
• 1/2" x 816" x 818"
• 1/2" x 818" x 820"
• 1/2" x 820" x 822"
• 1/2" x 822" x 824"
• 1/2" x 824" x 826"
• 1/2" x 826" x 828"
• 1/2" x 828" x 830"
• 1/2" x 830" x 832"
• 1/2" x 832" x 834"
• 1/2" x 834" x 836"
• 1/2" x 836" x 838"
• 1/2" x 838" x 840"
• 1/2" x 840" x 842"
• 1/2" x 842" x 844"
• 1/2" x 844" x 846"
• 1/2" x 846" x 848"
• 1/2" x 848" x 850"
• 1/2" x 850" x 852"
• 1/2" x 852" x 854"
• 1/2" x 854" x 856"
• 1/2" x 856" x 858"
• 1/2" x 858" x 860"
• 1/2" x 860" x 862"
• 1/2" x 862" x 864"
• 1/2" x 864" x 866"
• 1/2" x 866" x 868"
• 1/2" x 868" x 870"
• 1/2" x 870" x 872"
• 1/2" x 872" x 874"
• 1/2" x 874" x 876"
• 1/2" x 876" x 878"
• 1/2" x 878" x 880"
• 1/2" x 880" x 882"
• 1/2" x 882" x 884"
• 1/2" x 884" x 886"
• 1/2" x 886" x 888"
• 1/2" x 888" x 890"
• 1/2" x 890" x 892"
• 1/2" x 892" x 894"
• 1/2" x 894" x 896"
• 1/2" x 896" x 898"
• 1/2" x 898" x 900"
• 1/2" x 900" x 902"
• 1/2" x 902" x 904"
• 1/2" x 904" x 906"
• 1/2" x 906" x 908"
• 1/2" x 908" x 910"
• 1/2" x 910" x 912"
• 1/2" x 912" x 914"
• 1/2" x 914" x 916"
• 1/2" x 916" x 918"
• 1/2" x 918" x 920"
• 1/2" x 920" x 922"
• 1/2" x 922" x 924"
• 1/2" x 924" x 926"
• 1/2" x 926" x 928"
• 1/2" x 928" x 930"
• 1/2" x 930" x 932"
• 1/2" x 932" x 934"
• 1/2" x 934" x 936"
• 1/2" x 936" x 938"
• 1/2" x 938" x 940"
• 1/2" x 940" x 942"
• 1/2" x 942" x 944"
• 1/2" x 944" x 946"
• 1/2" x 946" x 948"
• 1/2" x 948" x 950"
• 1/2" x 950" x 952"
• 1/2" x 952" x 954"
• 1/2" x 954" x 956"
• 1/2" x 956" x 958"
• 1/2" x 958" x 960"
• 1/2" x 960" x 962"
• 1/2" x 962" x 964"
• 1/2" x 964" x 966"
• 1/2" x 966" x 968"
• 1/2" x 968" x 970"
• 1/2" x 970" x 972"
• 1/2" x 972" x 974"
• 1/2" x 974" x 976"
• 1/2" x 976" x 978"
• 1/2" x 978" x 980"
• 1/2" x 980" x 982"
• 1/2" x 982" x 984"
• 1/2" x 984" x 986"
• 1/2" x 986" x 988"
• 1/2" x 988" x 990"
• 1/2" x 990" x 992"
• 1/2" x 992" x 994"
• 1/2" x 994" x 996"
• 1/2" x 996" x 998"
• 1/2" x 998" x 1000"
• 1/2" x 1000" x 1002"
• 1/2" x 1002" x 1004"
• 1/2" x 1004" x 1006"
• 1/2" x 1006" x 1008"
• 1/2" x 1008" x 1010"
• 1/2" x 1010" x 1012"
• 1/2" x 1012" x 1014"
• 1/2" x 1014" x 1016"
• 1/2" x 1016" x 1018"
• 1/2" x 1018" x 1020"
•



Introducing... TRIM 'n LEAN[®]

NOW...All Beef Trimmed To 1/8" or Less Exterior Fat!

There's More To Our TRIM 'n LEAN[®] Beef Than Meets The Eye.

SAVE UP TO 1²⁰ per lb.
with ShopRite's **BIG BEEF BONANZA**

SAVE 90¢ A LB.
U.S.D.A. CHOICE BEEF
Boneless Bottom Round Roast
1⁵⁹
lb.

SAVE 60¢ A LB. U.S.D.A. CHOICE BONELESS BEEF
Top Round Roast
1⁹⁹
lb.

SAVE 90¢ A LB. U.S.D.A. CHOICE
Beef Shoulder London Broil
1⁶⁹
lb.

SAVE 1.00 A LB. U.S.D.A. CHOICE
Beef Rib Steak
2²⁹
lb.

SAVE 40¢ A LB. NOT LESS THAN 80% Lean
Ground Beef
1³⁹
ANY SIZE PKG. lb.

FULLY COOKED MEAT & EAT
Tyson Chicken Breast Cutlets
2¹⁹
12 oz. pkg.

The Dairy Place

ShopRite ALL NATURAL
Low Fat Yogurt
4¹⁰⁰
8-oz. conts.

SUNKIST
Orange Juice
1.39
64-oz. cart.

The Deli Place

WHY PAY MORE™
Wilson Sliced Bacon
1⁷⁹
1-lb. pkg.

WHY PAY MORE™
Wilson Meat Franks
.89
1-lb. pkg.

The Appy Place

STORE SLICED
Chicken Breast
2⁹⁹
lb.

ShopRite STORE SLICED

American Cheese
1.99
lb.

ASSORTED VARIETIES
On-Cor Deluxe Entrees
1⁷⁹
2-lb. pkg.

ASSORTED VARIETIES "SLIM LINE"
Budget Gourmet Entrees
1.39
9-1/2 oz. pkg.

ASSORTED FLAVORS
Flavor King Ice Cream
1.49
1/2 gal. cart.

ShopRite SANDWICH OR ROUND TOP
Batter Blend Bread
.59
22-oz. loaf

SEEDED, UNSEEDED, PUMPKINSEED OR SWIRL
Manischewitz Rye Bread
.89
15-oz. loaf

ShopRite REGULAR OR KRINKLE
Potato Chips
.99
11-oz. bag

HELP WANTED
Many ShopRite Supermarkets have part-time positions available now. Visit your local ShopRite and apply in person. ShopRite is an equal opportunity employer.

SAVE 90¢ A LB.
U.S.D.A. CHOICE BEEF
Boneless Rump of Beef Roast
1⁷⁹
lb.

SAVE 1.00 A LB. U.S.D.A. CHOICE BEEF
Boneless Chuck Pot Roast
1⁶⁹
lb.

SAVE 1.00 A LB. THE ORIGINAL LONDON BROIL
Beef Flank Steak
2⁹⁹
lb.

SAVE 1.10 A LB. BONE-IN
Beef Rib Club Steak
3²⁹
lb.

SAVE 40¢ A LB. NOT LESS THAN 85%
Extra Lean Ground Beef
1⁷⁹
ANY SIZE PKG. lb.

FROZEN
Grade 'A' Capons
1⁷⁹
lb.

The Grocery Place

WHY PAY MORE™
Apple & Eve Apple Juice
.89
1/2 gal. bot.

SOLID PACK IN OIL OR WATER
Chicken or Sea White Tuna
.89
6 1/2-oz. can

ALL VARIETIES COFFEE
Maxwell House Master Blend
1⁹⁹
13-oz. can

REGULAR OR UNBLEACHED
Gold Medal Flour
.69
5-lb. bag

WHY PAY MORE™
ShopRite Apple Cider
1.99
1 gal. bot.

ALL VARIETIES
Hawaiian Punch
.69
1 qt. 14 oz. can

INSTANT COFFEE
Maxwell House
4.99
12-oz. jar

GENERAL MILLS HONEY NUT CEREALS 14 OZ. OR REG.
Cheerios Cereal
1.75
15-oz. box

ALL VARIETIES, AUNT MILLIE'S
Spaghetti Sauce
1.39
1 qt. 10 oz. jar

General Merchandise
Havoline Motor Oil
.79
1 qt. plastic bottle

10W/30 OR 10W/40 (5.1 MTG.)
REBATE AVAILABLE ON C.S. OF 121
Texaco Antifreeze
3.49
1 gal. cont.

FUNK & WAGNALLS
Encyclopedia
4⁹⁹
ON SALE THIS WEEK VOL. #7 each

ShopRite Coupon
WITH THIS COUPON
Chicken of the Sea White Tuna
.69
ONE (1) 6 1/2-oz. CAN IN OIL OR WATER, SOLID PACK

SAVE 1.10 A LB.
U.S.D.A. CHOICE BEEF
Boneless Seamed Eye Round Roast
1⁹⁹
lb.

SAVE 1.00 A LB. U.S.D.A. CHOICE THIN CUT
Fresh Beef Brisket
1⁹⁹
lb.

SAVE 1.10 A LB. U.S.D.A. CHOICE
Boneless Sirloin Steak
2³⁹
lb.

SAVE 1.00 A LB. U.S.D.A. CHOICE BEEF
Boneless Club Steak
3⁹⁹
lb.

SAVE 30¢ A LB. U.S.D.A. CHOICE BEEF CHUCK CUT
Boneless Beef For Stew
1⁸⁹
lb.

STEAKWICH FROZEN
Sandwich Steaks
3⁹⁹
32-oz. pkg.

The Produce Place

ALL VARIETIES EXCEPT ANGEL FOOD
Duncan Hines Cake Mixes
.79
1-lb. 2 1/4 oz. box

REGULAR OR NO SALT ADDED
Hunt's Tomato Sauce
6¹⁰⁰
8-oz. cans

REGULAR OR CAFFEINE FREE
Diet Coke, Coke or Tab
.99
2-lb. bot.

CRUSHED OR PUREE
Progresso Tomatoes
.69
1-lb. 12 oz. can

HEINZ
Keg O' Ketchup
1.19
2-lb. bot.

CHUNK, SLICED OR CRUSHED IN JUICE
Dole Pineapple
.69
1-lb. 4 oz. can

Double Your Money Back Meat Guarantee
COMPLETE DETAILS AT ShopRite

SAVE 70¢ A LB. U.S.D.A. CHOICE BEEF
Top Round London Broil
2²⁹
lb.

SAVE 1.20 A LB. U.S.D.A. CHOICE BEEF LOIN TAILLESS
Porterhouse or T-Bone Steak
3³⁹
lb.

SAVE 1.00 A LB. U.S.D.A. CHOICE BEEF ROAST
Center Cut Rib Roast
1⁹⁹
lb.

SAVE 50¢ A LB. QUICK TO FIX
Beef Round Cubed Steak
2⁴⁹
lb.

THORN APPLE VALLEY HONEY HAM OR
Boneless Smoked Ham
3¹⁹
WATER ADDED lb.

The Produce Place

U.S. #1 SIZE 'A'
All Purpose Potatoes
.99
10-lb. bag

LUSCIOUS CALIFORNIA
Honeydew Melons
1²⁹
6-SIZE (RACI)

SWEET CALIFORNIA
Seedless Grapes
.99
CALIFORNIA 120-135 SIZ

WESTERN 120-135
Bartlett Pears
.59
lb.

CALIFORNIA FOREST (OR)
Bosc Pears
.99
lb.

IDEAL FOR SNACKING
Seckel Pears
.99
lb.

ITALIAN PRUNES
.69
lb.

Senior Citizen Discount Policy
Sixty-two or older. You are welcome to save a full 10% off our regular Low Prescription prices. No involved applications to fill out. Simply present proof of age and we will immediately issue a Golden Age Discount Card that can be used with your first purchase. This card is for prescription purchases only and is not applicable to P.A.A. or Third Party Prescriptions.

Call us at 235-0821

*Materna[®] 1.60 Tablets 100's	13⁹⁹	*Stuartnatal[®] 1+1 Tablets 100's	12⁹⁹
*Poly Vi Flor[®] Tablets 0.5 mg or 1 mg 100's	7⁹⁹	*Poly Vi Flor[®] .25 mg Drops 50cc	6⁴⁹
*Tri Vi Flor[®] .25 mg Drops 50cc	5⁹⁹	*Multi Vitamin Tablets & Fluoride 0.5 mg or 1 mg 100's	3⁹⁹

Our pharmacists will gladly arrange transfer of an existing prescription from your present pharmacy to us.

Call us at 235-0821

* Requires Prescription Expires 10/11/86
*Quantities less than those listed may be slightly higher in price.